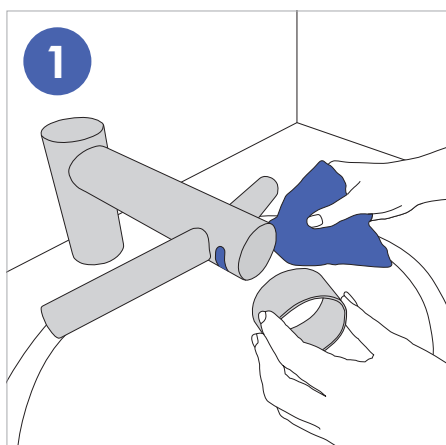
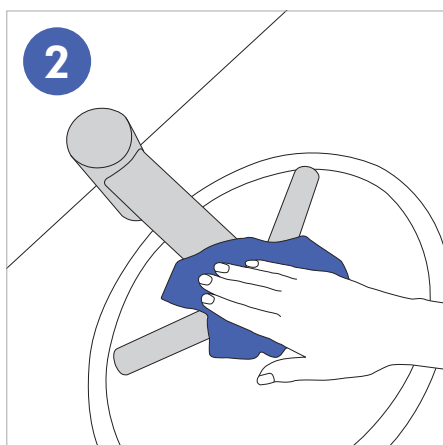


# Keep it clean

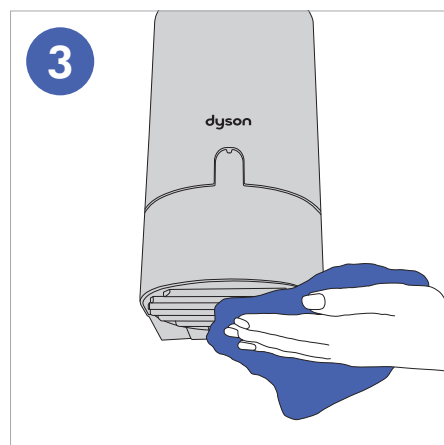
The Dyson Airblade Wash+Dry hand dryer should be cleaned daily. Follow these 3 simple steps to ensure the machine performs to its best and remains hygienic.



Wipe sensors using a soft cloth and non-abrasive cleaner then place cleaning cap over sensors to prevent activation.



Clean all tap surfaces, sink, mirror and any walls or counter tops. When complete **REMEMBER** to remove cleaning cap.



**REGULARLY** clean air inlets on base of motor bucket (under sink). Ensure plughole in sink is free from blockages so water can drain freely.

## Important information

Most professional cleaning chemicals can be used.

Using the wrong cleaning method or product may invalidate the warranty.

All cleaning chemicals should be used exactly as indicated by the manufacturer's instructions (including appropriate dilution).

Any chemicals intended for use should first be tested on an inconspicuous area to confirm suitability.

Aside from cleaning chemicals, care should be taken to avoid any harmful fluids from coming into contact with the product, in particular oils and alcohol-based products.

Do not pressure wash the machine.

The following are some that are harmful to the machine.

### DO NOT USE



Alcohol-acid mixes

Alcohol

Solvent/oil-based mixes

Quaternary ammonium

Alkali-bleach mixes

Foaming ingredients

Bleach or abrasive cleaners

### Contact us for more information:

0800 345 77 88

business@dyson.co.uk

www.dyson.co.uk

## Dyson Airblade Wash+Dry hand dryer cleaning requirements and suggested cleaning methods

Requirement	Suggested method	Comments
Routine cleaning of light soiling.	Soap, detergent or dilute (1%) ammonia solution in warm clean water. Apply with a clean sponge, soft cloth or soft-fibre brush then rinse in clean water and dry.	Satisfactory on most surfaces.
Fingerprints.	Detergent and warm water, alternatively, hydrocarbon solvent.	Proprietary spray-applied polishes available to clean and minimise remarking.
Oil and grease marks.	Hydrocarbon solvents (methylated spirit, isopropyl alcohol or acetone).	
Stubborn spots, stains and light discolouration. Water marking. Light rust staining.	Mild, non-scratching creams and polishes. Apply with soft cloth or soft sponge and rinse off residues with clean tap water and dry. Drying marks may be avoided using an air blower or wiping with clean disposable wipes.	Avoid cleaning pastes with abrasive additions, wire wool or hard objects such as knife blades. These can create surface scuffs and scratches or even cause rust marks. Suitable cream cleansers are available with soft calcium carbonate additions. Do not use chloride solutions.

## Automatic duty flush

### Bacteria can grow in inactive water systems

In some commercial locations water taps can go unused for weeks. Water within the system can stagnate, leading to the growth of bacteria.

### Re-engineered with automatic duty flush

One way to counter bacteria proliferation is to flush water outlets before water can stagnate. The Dyson Airblade Wash+Dry hand dryer has re-engineered software to do this for you.

### How it works

If water flow isn't activated for 24 hours, the water solenoid will open automatically. Water will be flushed through for 60 seconds, expelling standing water in the system.

## Water supply cleanliness and biological growth

In some countries there are regulations or guidelines that require temperature controlled water supply systems (such as that supplied to the Dyson Airblade Wash+Dry hand dryer) to be subjected to regular cleaning to minimise any biological growth.

To enable you to meet these regulations, the Dyson Airblade Wash+Dry hand dryer has been designed and tested to withstand internal cleaning both with hot water up to 95°C and with sodium hypochlorite at a concentration of 0.45%

When carrying out internal cleaning of the Dyson Airblade Wash+Dry hand dryer, please be aware of any safety considerations when using hot water or chemicals. Dyson will not be responsible for any injury caused by this process.

Dyson is unable to advise regarding the details of the cleaning you should carry out because this will be specific both to the applicable regulations and to your water supply system.



### Contact us for more information:

0800 345 77 88

business@dyson.co.uk

www.dyson.co.uk