

CF 1

Cool CF1 logo

cool

User manual

Front view of the Dyson Cool™ CF1 fan, showing the loop amplifier with the screen and product controls below.



SV12 JN.00000 PN.000000-00-00
00.00.00 VERSION NO.01

Contents

In the box

Assembling your machine

Product controls

Connecting to the MyDyson™ app

Connecting to your smart home

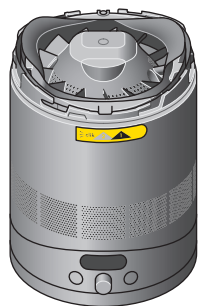
Cleaning your machine

Clearing blockages

dyson Dyson logo

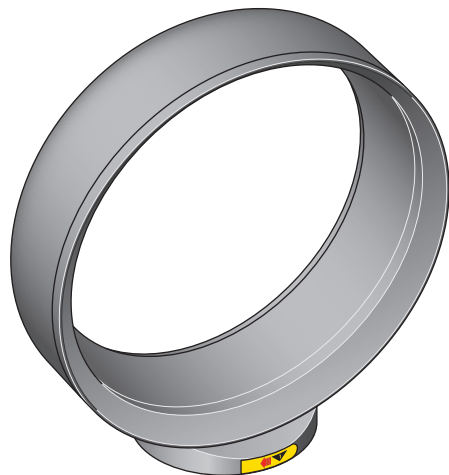
In the box

The fan base, showing the location of the product controls on the base of the machine.



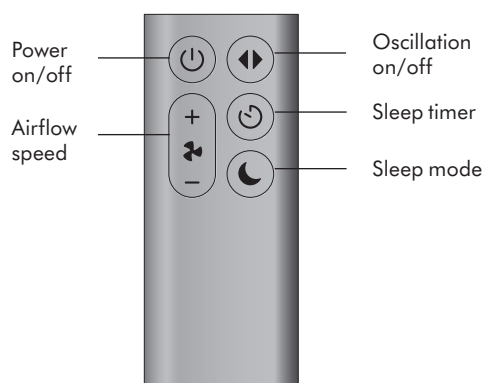
Fan base

The loop amplifier for the Dyson Cool™ CF1 fan.



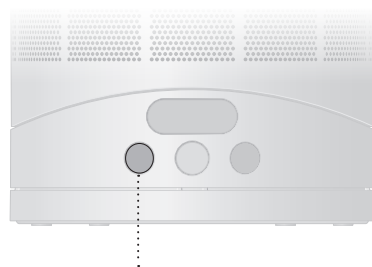
Loop amplifier

Remote control can be purchased at www.dyson.hk



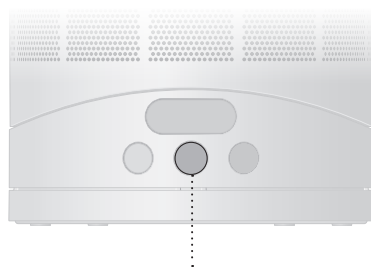
Remote control

A diagram showing that the Sleep mode button is on the left.



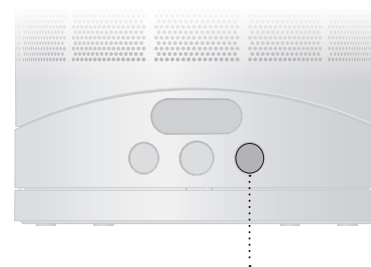
Sleep mode button

A diagram showing that the combined Power button and Fan speed dial is in the middle.



Power button and Fan speed dial

A diagram showing that the Oscillation mode button is on the right.

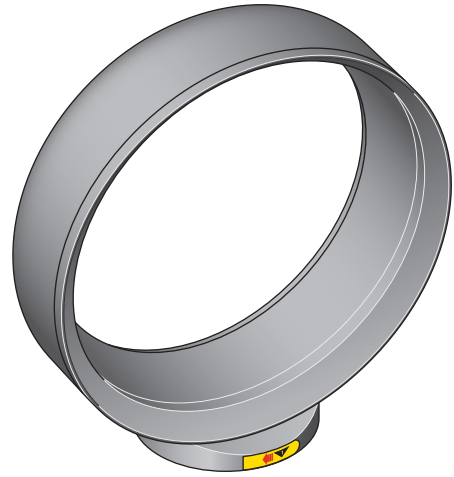


Oscillation mode button

Assembling your machine

Step 1

Lower the loop amplifier onto the base, aligning the arrows.

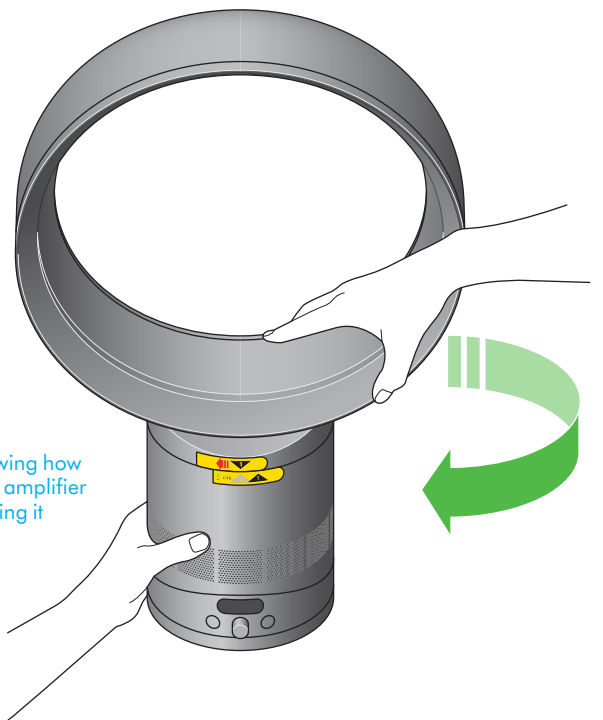


A diagram showing how the loop amplifier has to be placed onto the base.



Step 2

Once aligned, turn the loop amplifier clockwise to lock.



A diagram showing how to lock the loop amplifier in place by turning it clockwise.

Product controls

Power

Press the combined Power button and Fan speed dial, situated in the middle of the controls, to start/stop your machine.

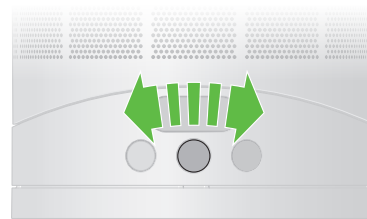
A diagram of the combined Power button and Fan speed dial on the Dyson Cool™ CF1 fan.



Fan speed control

Turn the combined Power button and Fan speed dial to the right to increase fan speed, turn it to the left to decrease fan speed.

A diagram showing you can turn the combined Power button and Fan speed dial right for more speed or left for less.



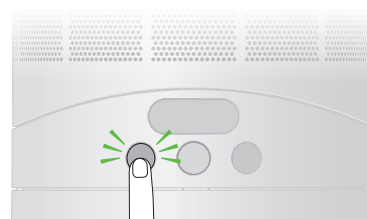
The screen display for the Dyson Cool™ CF1 fan showing fan speed.



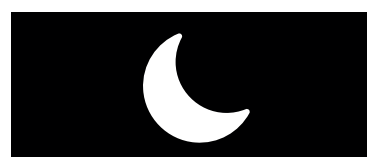
Sleep mode

Press the button on the left to activate Sleep mode. Your fan will blow air at a lower speed and with its LCD screen dimmed.

A diagram of someone pressing the left most button on the Dyson Cool™ CF1 fan to activate Sleep mode.



The screen display for the Dyson Cool™ CF1 fan showing Sleep mode.



Oscillation

Press the button on the right to cycle through oscillation angles.
Choose from 10, 40 or 70 degrees.

A diagram of someone pressing the right most button on the Dyson Cool™ CF1 fan to activate oscillation.



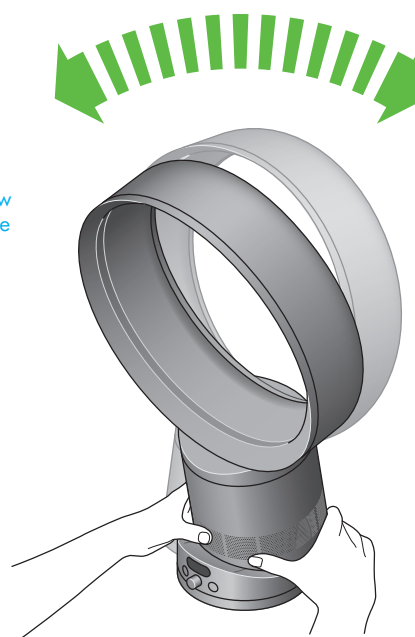
The screen display for the Dyson Cool™ CF1 fan showing oscillation.



Manual tilt

Carefully hold the base and the top of the air loop amplifier. Tilt forward or backward for the required airflow angle.

A diagram showing how you can manually tilt the Dyson Cool™ CF1 fan.



Connecting to the MyDyson™ app via Bluetooth®

Take full control with the MyDyson™ app and access step-by-step setup and support, control how and when your fan operates, and automatically keep up to date with the latest software updates.

Download the MyDyson™ app from the App Store or Google Play.

Open the app and follow the on-screen instructions to create a new account.



[MyDyson logo.](#)

Apple, the Apple logo, and Siri are trademarks of Apple Inc. App Store is a service mark of Apple Inc. Google Play, the Google Play logo, Google Assistant are trademarks of Google LLC.



[Download on the App Store](#)

Android and the Android logo are trademarks of Google LLC.

The Android robot is reproduced or modified from work created and shared by Google and used according to terms described in the Creative Commons 3.0 Attribution License.



[Available on Android stores](#)

The Bluetooth® word mark and logos are registered trademarks owned by the Bluetooth SIG, Inc. and any use of such marks by Dyson is under license.

Connecting to your smart home

Using Amazon Alexa

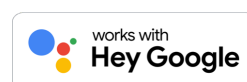
Ask Alexa to enable the Dyson skill, to control your Dyson fan. And set a routine that automates how your machine works with other devices in your home.



[works with amazon alexa](#)

Using Google Assistant

Control all of your connected fans with Google or set a routine to automate how your machine works with other devices in your home. Just say "Hey Google" to get started.



[Works with Hey Google](#)

Using Siri

Connect your Dyson machines to Siri Shortcuts and you'll be able to control them with your voice, on your Apple device.

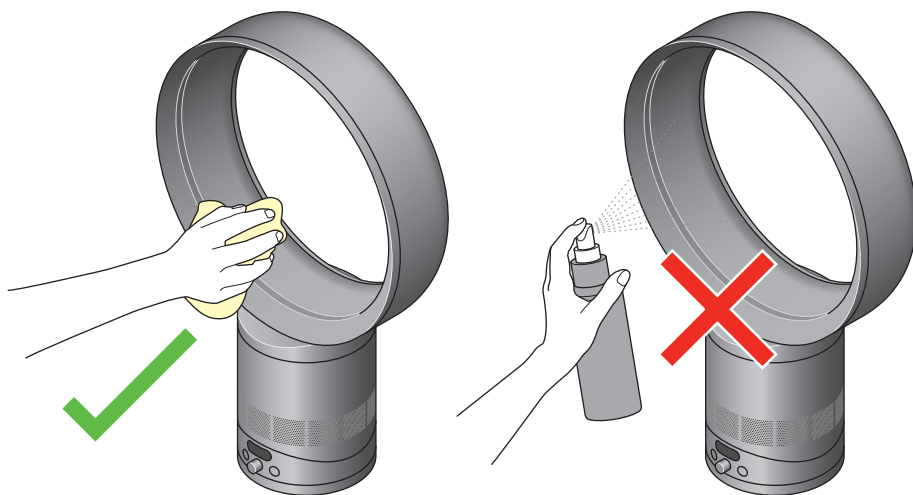


[Siri](#)

Amazon, Alexa, Amazon Echo and all related logos are trademarks of amazon.com, Inc. or its affiliates.

Cleaning your machine

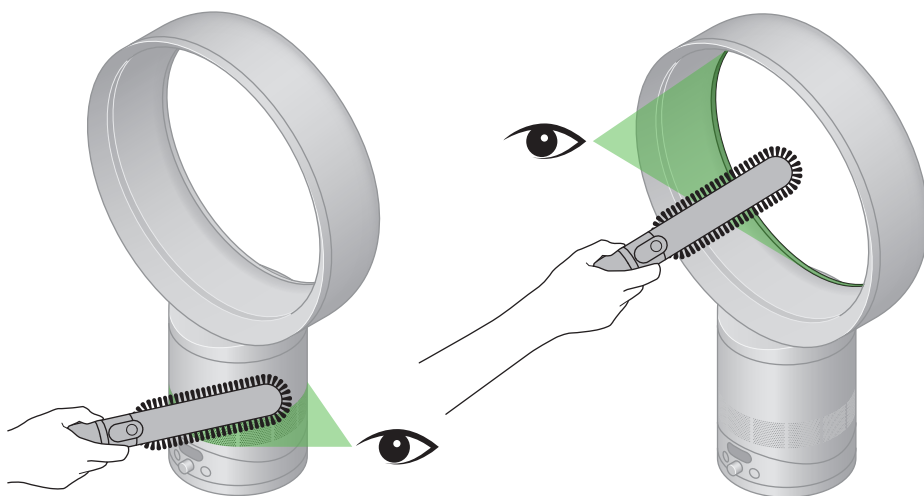
Unplug your machine before cleaning. To clean, wipe with a dry or damp cloth. Do not use detergents or polishes to clean the appliance.



A diagram showing how to and how not to clean your Dyson Cool™ CF1 fan.

Clearing blockages

Look for blockages in the air inlet holes. Use a soft brush to remove debris. Look for blockages in the small aperture inside the loop amplifier. Use a soft brush to remove debris.



A diagram showing how to remove blockages from your Dyson Cool™ CF1 fan.