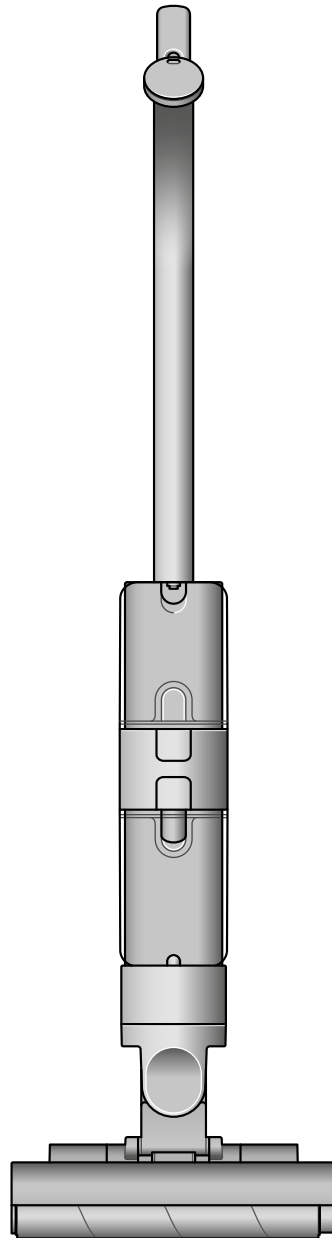


dyson washG1

User manual



Contents

In the box

Download the MyDyson™ app

Getting started

The LCD screen

Quick start

Regular maintenance:

Self-clean cycle

Washing the Dirty water tank

Washing the Debris tray

Washing the rollers

Washing the Debris brush bars

Washing the Clean water tank

Cleaning the dock

Replacing the rollers

Replacing the Debris brush bars

Disassembling your machine

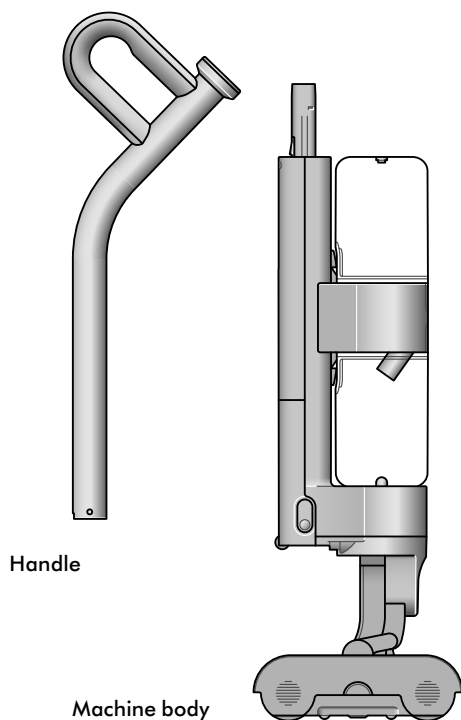
Looking after your machine

In the box

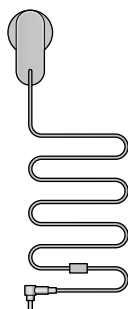
Your machine is boxed in two parts:

1. Machine body.
2. Handle.

Simply attach the handle to the main body.

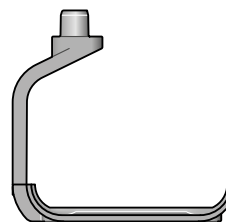


Wet cleaner with click-in battery



Charger

One-piece charger with plug, connector and cable. Charges your machine with or without a dock.



Charging dock

Dyson WashG1™ wet cleaner charges on the dock, ready for your next clean.

Our recommendation

Keep the charging jacks (on the charger and charging dock) away from conductive materials such as carbon fibre.

Disconnect the charger from the mains before cleaning.

Download the MyDyson™ app

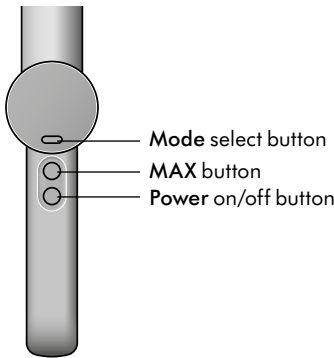
Download the MyDyson™ app from the App Store or Google Play. Open the app and follow the on-screen instructions to create a new account.



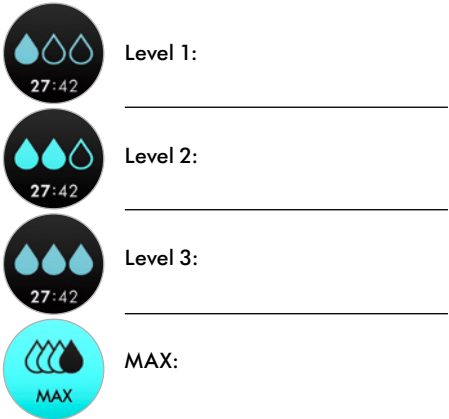
Apple and the Apple logo are trademarks of Apple Inc., registered in the U.S. and other countries. App Store is a service mark of Apple Inc., registered in the U.S. and other countries. Google Play and the Google Play logo are trademarks of Google Inc.

Getting started

Get to know your machine controls

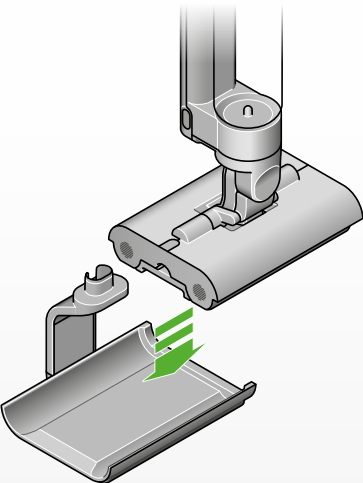


Hydration modes



Before use

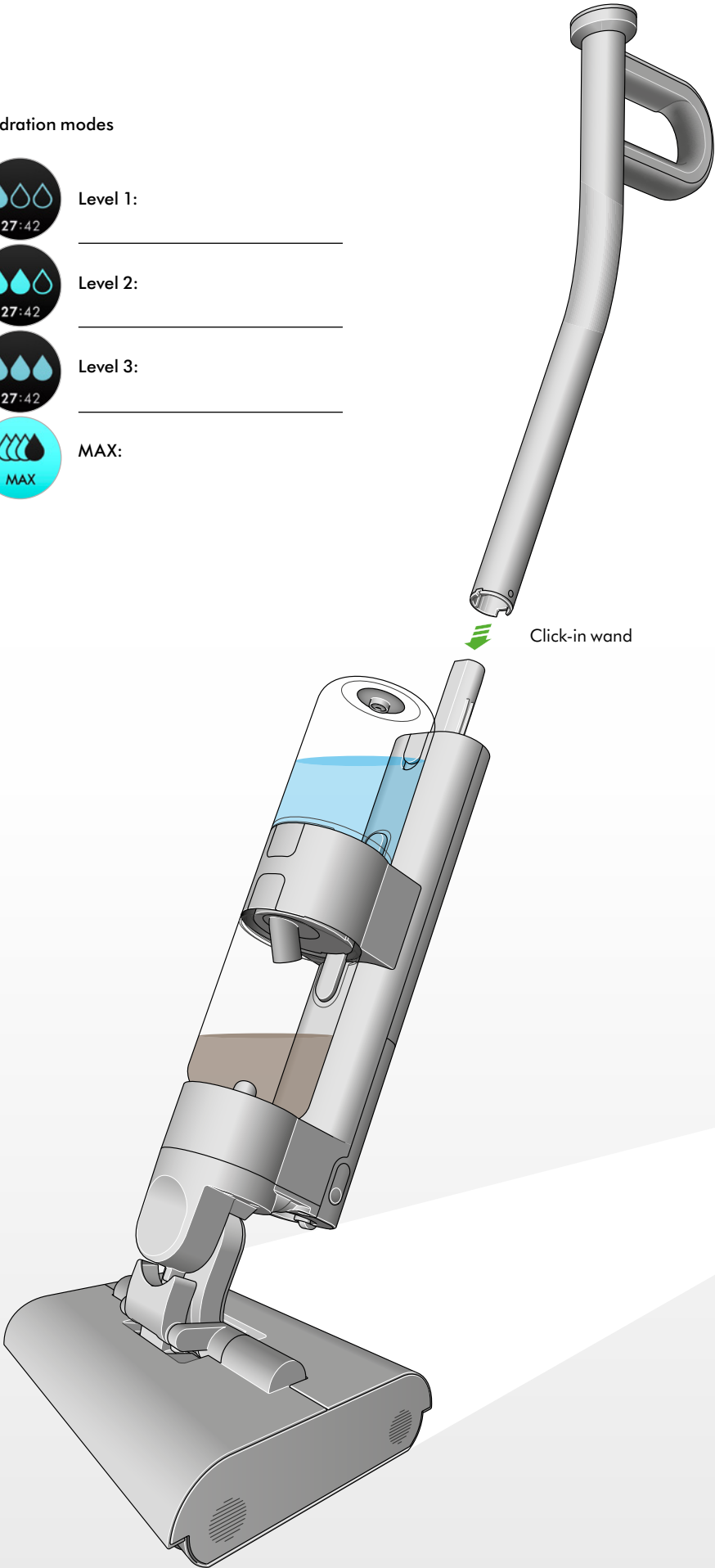
Charge on dock



Fill clean water tank. If using Dyson 02 Probiotic Hard floor cleaning solution add 20ml, as directed on the bottle.



Dyson 02 Probiotic Hard floor cleaning solution



The LCD screen

The LCD screen displays helpful performance information such as the selected hydration mode, remaining run time and essential maintenance alerts.

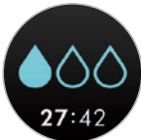
Cleaning

Use the Mode button to select your hydration level. Press start to begin cleaning.

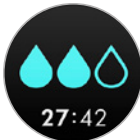
Choose the hydration mode to suit the task:

Water droplet icons indicate Dyson WashG1™ wet cleaner hydration modes: 1, 2 and 3.

Level 1
For debris, hair and light spills.



Level 2
For mealtime mess, spills and wet footprints.



Level 3
For sticky spills, muddy boot marks and dried-on stains.



MAX
For extra hydration on stubborn stains.



Alerts

When your Dirty water tank is full, you will be prompted with the alert: **Empty dirty water tank**.



Replacement rollers

We recommend replacing Dyson WashG1™ wet cleaner rollers at around 6 months, depending on usage. The machine will alert you when they need to be changed – and display a QR code for ordering replacements. When fitting new rollers, reset the lifetime counter.



Runtime

The LCD screen constantly displays the machine's remaining run time underneath the water droplet icon – so you'll always know how much cleaning time you have left.

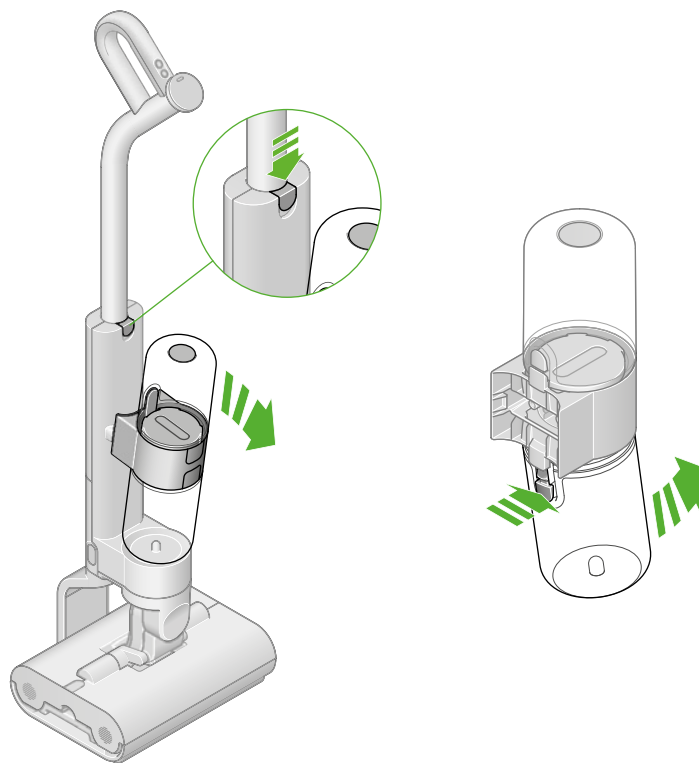


Your Dyson WashG1™ wet cleaner runs on a click-in battery with up to 35 minutes of run time. To extend your cleaning time, you can order an extra click-in battery at www.dyson.com

Quick start

Remove the Clean water tank

Press the release button and lift the tank assembly away from the machine. Remove the Clean water tank from the tank collar.



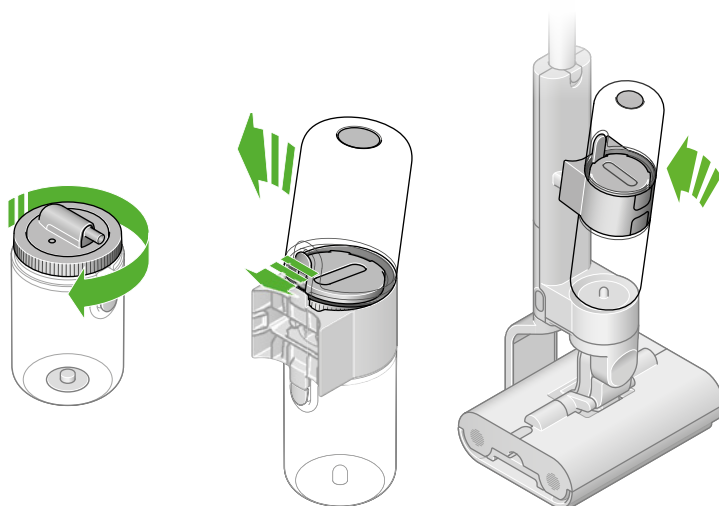
Fill the Clean water tank

Open the Clean water tank by twisting the lid anti-clockwise. Fill with clean water to the MAX line on the side of the tank. If using Dyson 02 Probiotic Hard floor cleaning solution add 20ml, as directed on the bottle.



Close and replace the Clean water tank

Close the lid. Replace the Clean water tank onto the tank collar. Reconnect the tank assembly to the body of the machine.



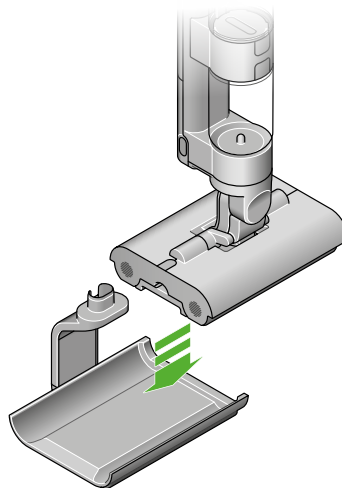
Allow rollers to fully hydrate

On first use, the new rollers will take approximately 5 minutes to reach full and even hydration.

Regular maintenance:

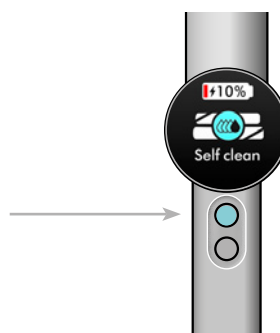
Self-clean cycle

Dyson WashG1™ wet cleaner self cleans on the dock while charging. Place on the dock, and make sure the charger is connected.



Using the menu button, scroll to Self clean using the blue button and select start.

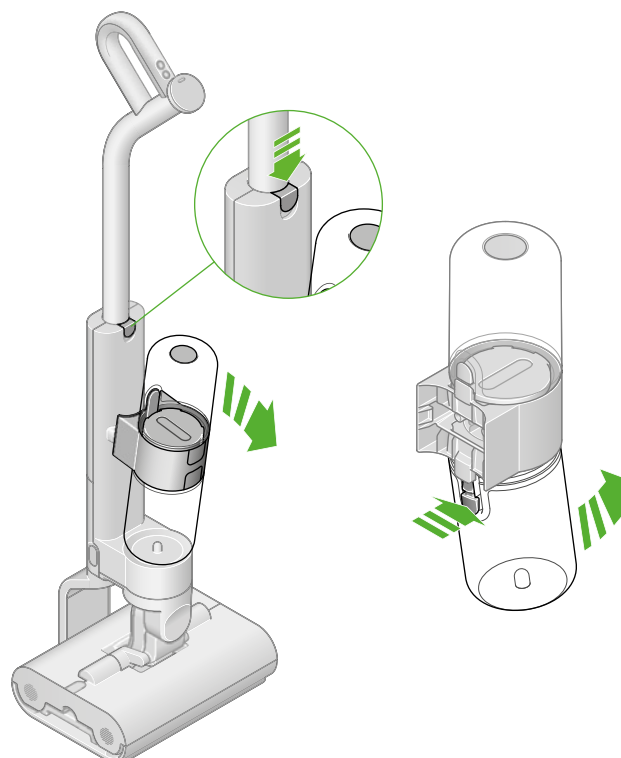
Dyson WashG1™ wet cleaner will now self-clean its entire system, for 140 seconds, leaving it refreshed and ready for your next clean.



Washing the Dirty water tank

Remove the tank assembly

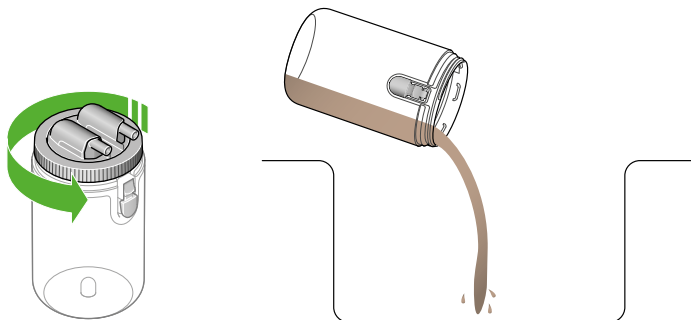
Press the release button to remove the tank assembly from the product. Remove the Dirty water tank from the tank collar.



Regular maintenance:

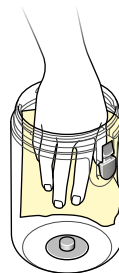
Open the Dirty water tank

Turn the lid anti-clockwise to open the Dirty water tank.
Empty the Dirty water into the sink.



Clean the Dirty water tank

Wash the Dirty water tank in a sink, using warm water, detergent and a cloth.

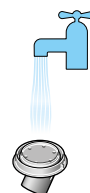


Open the Float Assembly

Rotate and remove the Float Assembly from the Dirty water tank lid.

Clean the Float Assembly

Wash the Float Assembly in a sink, using warm water, detergent and a cloth. Run clean water onto the Lid Assembly to remove debris from the filter.



Soak filter every six months

We recommend cleaning the filter inside the Dirty water tank lid, every six months, to remove limescale. To access the filter mesh, open the lid Float Assembly a quarter turn. Soak the mesh in citric acid/vinegar for one hour; this will counter limescale build up.



Replace the Float Assembly

Attach the Float Assembly to the Dirty water tank lid.

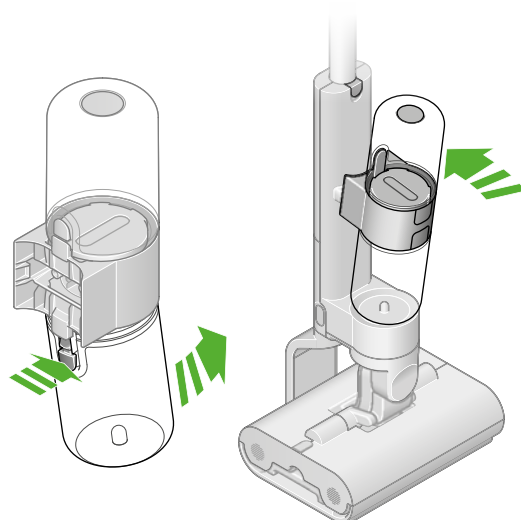


Replace the Dirty water tank

Turn the lid clockwise to close.

Reassemble the Dirty water tank

Reconnect the empty Dirty water tank onto the body of the machine.

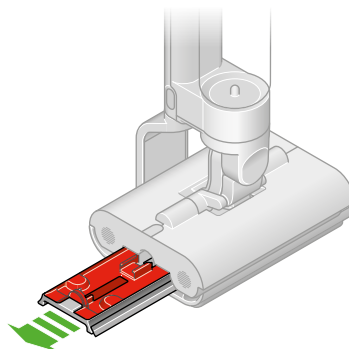


Regular maintenance:

Washing the Debris tray

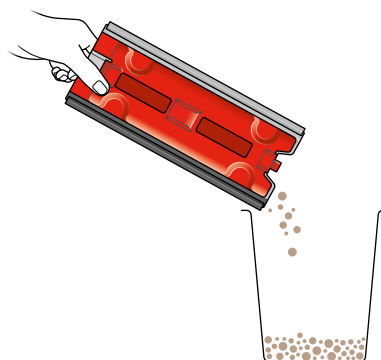
Remove the Debris tray

Slide the tray from the machine.



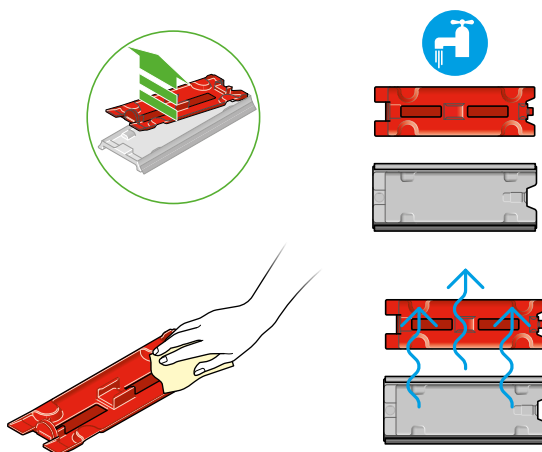
Empty the tray

Take the tray to the bin and dispose of the solid debris. Tap the tray on the side of the bin to dislodge any remaining debris.



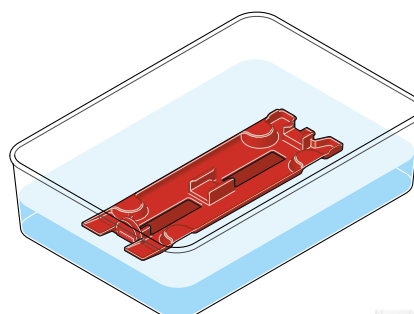
Remove and wash the tray

Rinse the tray in a sink. Remove the red filter material and wash with a cloth, in warm water and detergent, to remove any remaining dirt.



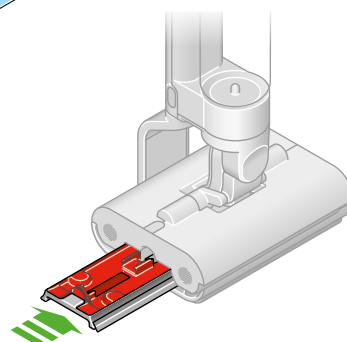
Soak filter every six months

We recommend cleaning the filter inside the Debris tray, every six months, to remove limescale. Soak the mesh in citric acid/vinegar for one hour; this will counter limescale build up.



Reassemble

Slide the tray back into the machine.

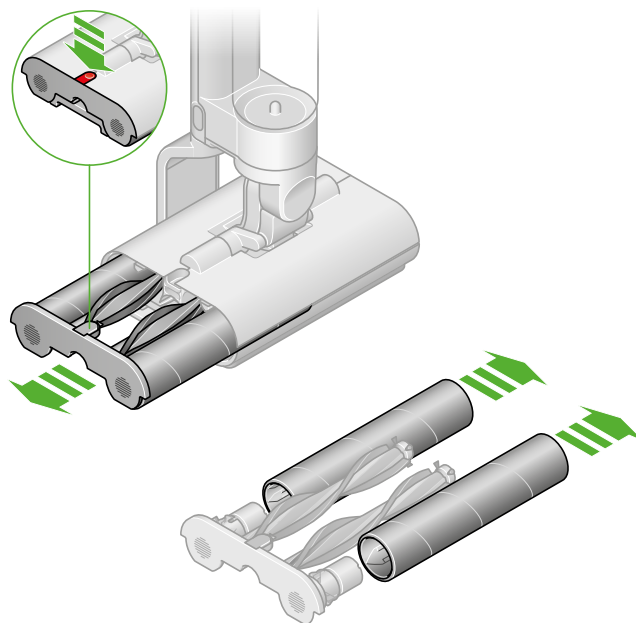


Regular maintenance:

Washing the rollers

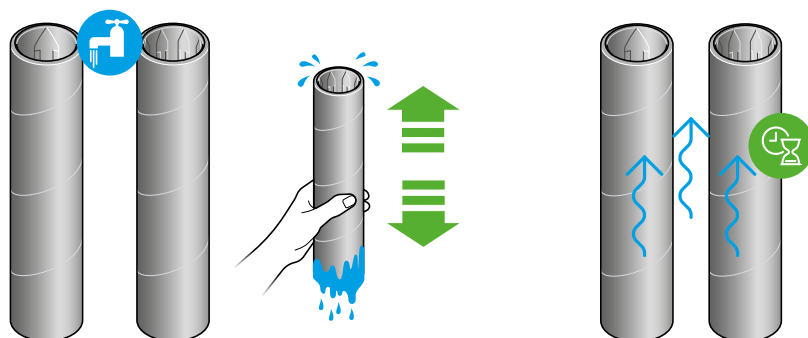
Remove the rollers

Press the red release catch to slide out the roller assembly – and simply detach the rollers.



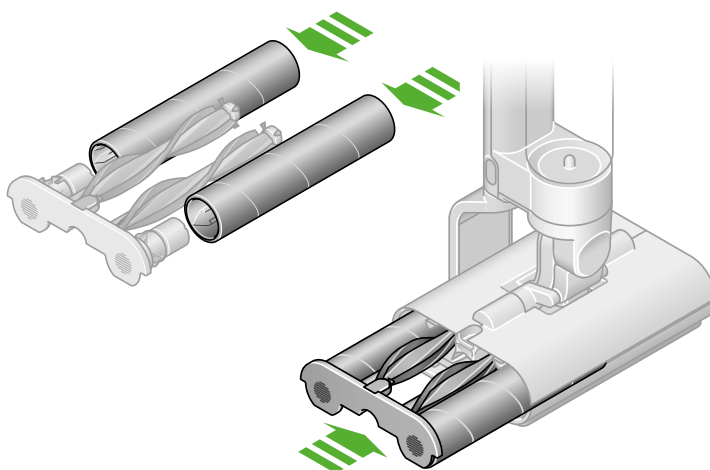
Wash the rollers

Wash the rollers in a sink, using warm water and detergent. Squeeze rollers to remove excess water and leave to dry. Replace the rollers to the end cap.



Reattach the rollers

Slide the rollers and Debris brush bar into the cleaner head until the end cap clicks.



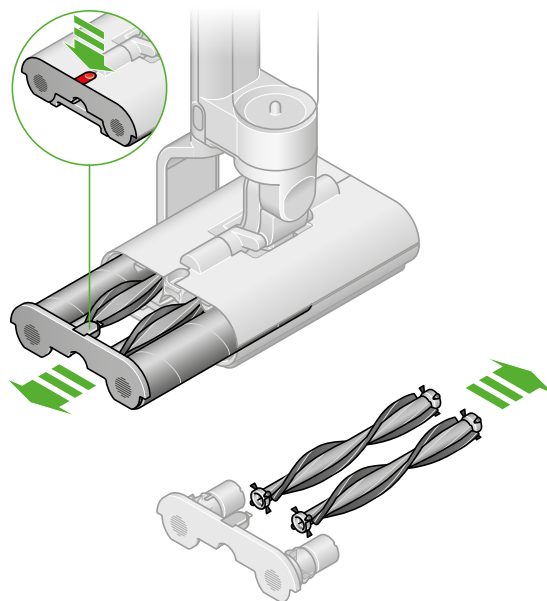
Regular maintenance:

Washing the Debris brush bars

Remove the Debris brush bars

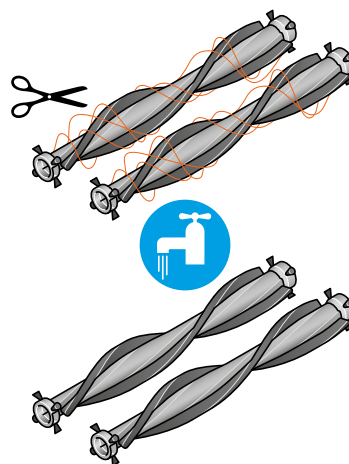
Pop out the end cap.

Remove the Debris brush bar from the end cap.



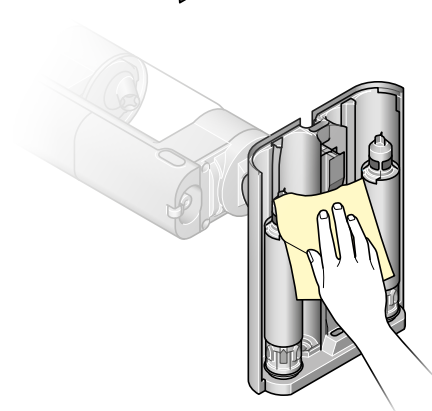
Remove debris

Use scissors to cut any hair wrapped around the Debris brush bar.



Wash the Debris brush bar

Wash the Debris brush bar in a sink, using a cloth, warm water and detergent.

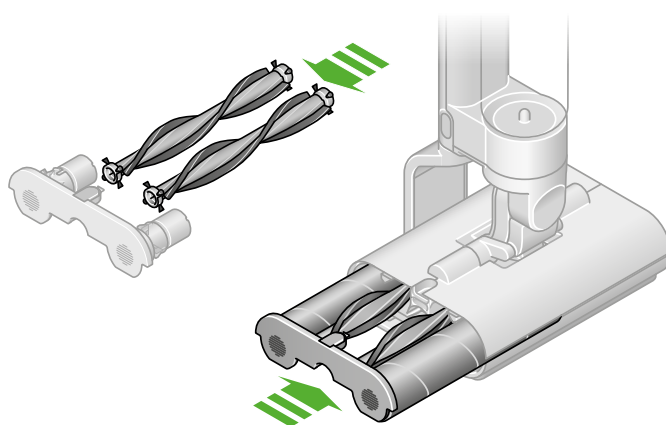


Wipe the underside of the cleaner head with a damp cloth and detergent.

Reattach the Debris brush bar

Reattach the Debris brush bar to the end cap.

Slide the rollers and Debris brush bar into the cleaner head until the end cap clicks.

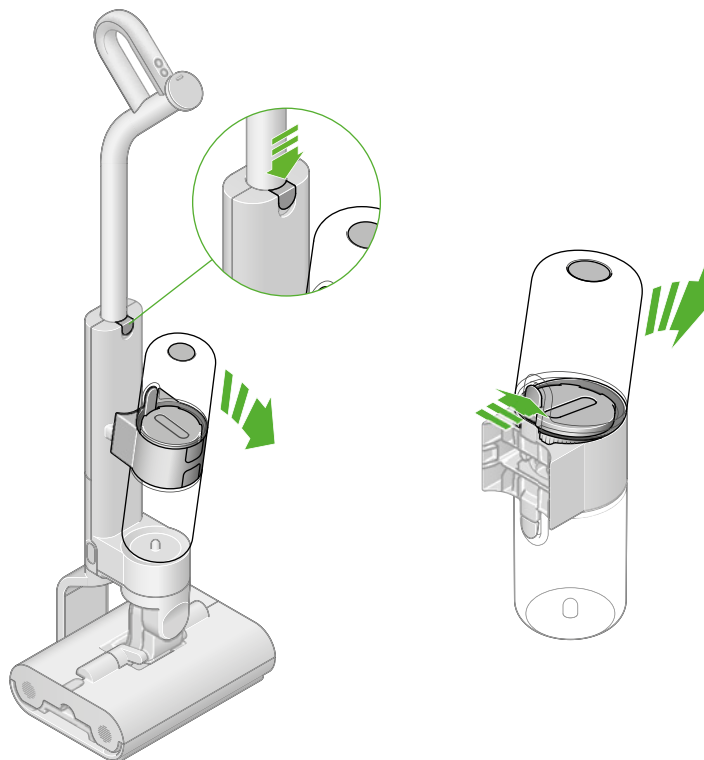


Regular maintenance:

Washing the Clean water tank

Remove the tank assembly

Press the release button to remove the tank assembly from the machine. Remove the Dirty water tank from the tank collar.



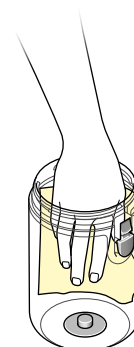
Open the Clean water tank

Turn the lid anti-clockwise to open the Clean water tank.



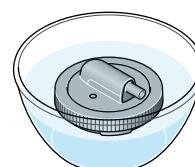
Clean the Clean water tank

Wash the Clean water tank in a sink, using warm water, detergent and a cloth.



Soak filter every six months

We recommend cleaning the filter in the Clean water tank, every six months, to remove limescale. Soak the mesh in citric acid/vinegar for one hour; this will counter limescale build up.



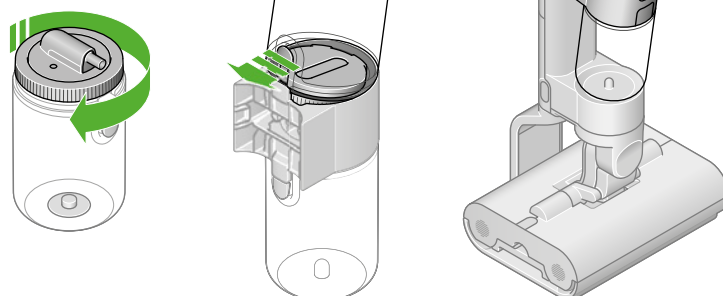
Replace the Clean water tank

Close the lid of the Clean water tank by turning it clockwise.



Reassemble the Clean water tank

Reconnect the empty Clean water tank onto the body of the machine.

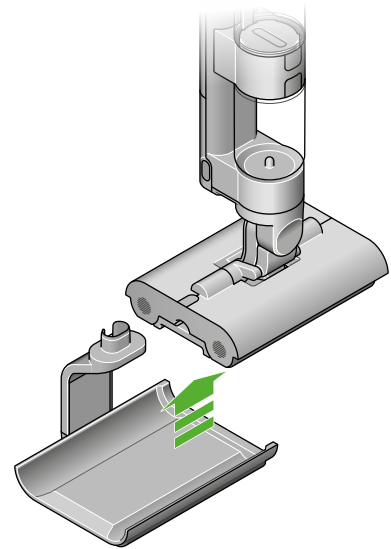


Regular maintenance:

Cleaning the dock

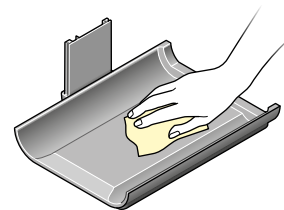
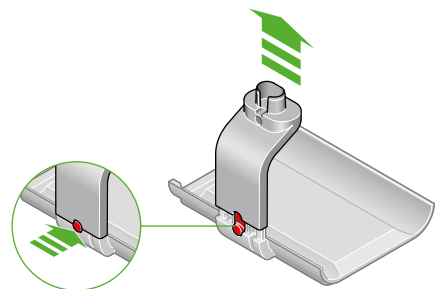
Remove the machine from the Dock

Press the release button on the rear of the Dock and lift off the charging post.



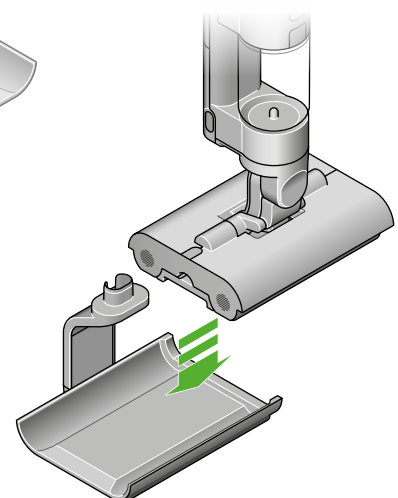
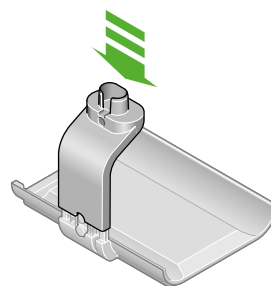
Clean the Dock tray

Make sure the charger is disconnected from the mains before cleaning. Wipe over with warm water, detergent and a cloth.



Replace the Dock tray

Replace the charging post onto the Dock.
Replace the machine on the Dock.

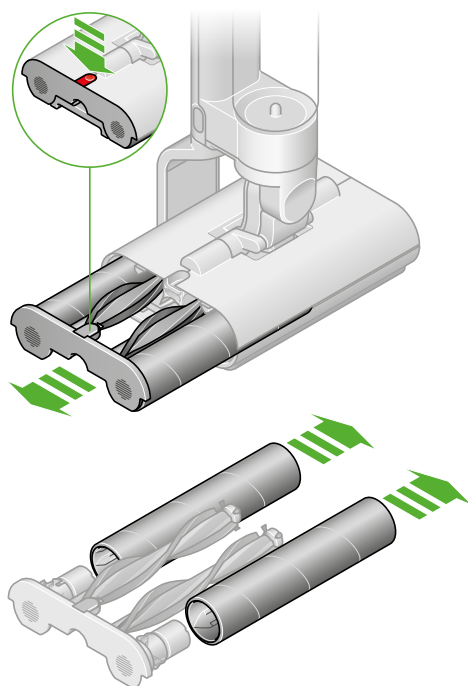


Regular maintenance:

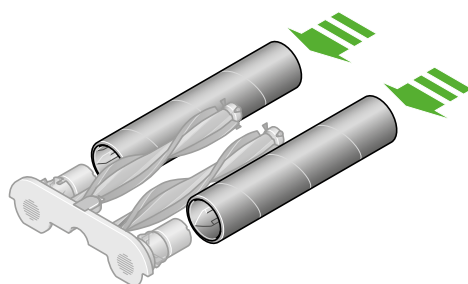
Replacing the rollers

Remove the rollers

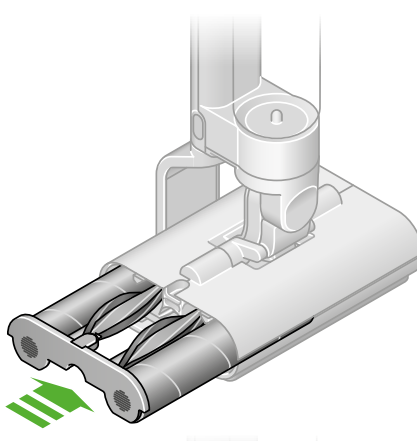
Pull out the end cap with the roller and Debris brush bar.
Remove the rollers from the end cap.



Dispose of used rollers into your bin

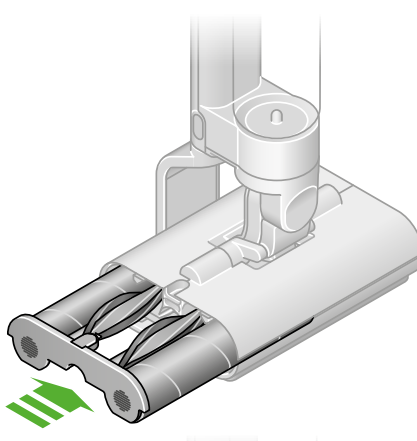


Fit new rollers onto the end cap



Reattach the roller

Slide the roller and Debris brush bar into the cleaner head until the end cap clicks.



Check the lifespan of your rollers

Your Dyson WashG1™ wet cleaner rollers have a lifespan of 25 hours. The machine will alert you when they need to be changed – and display a QR code for ordering replacements.

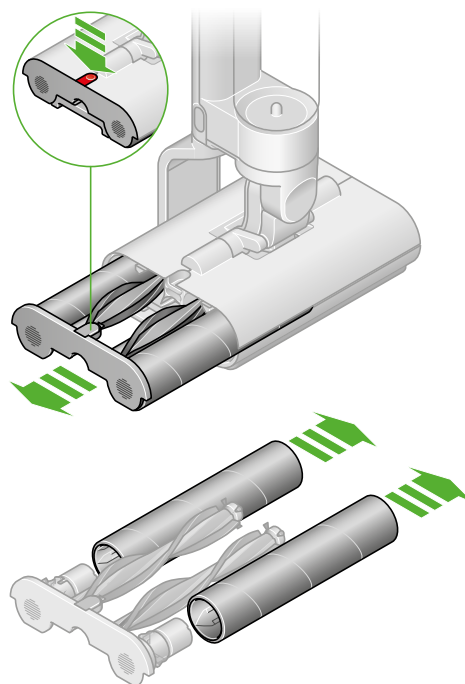


Regular maintenance:

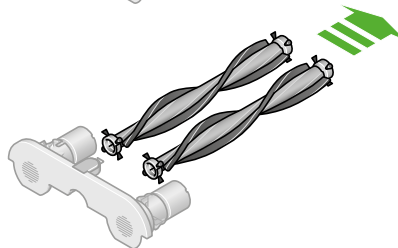
Replacing the Debris brush bars

Remove the rollers

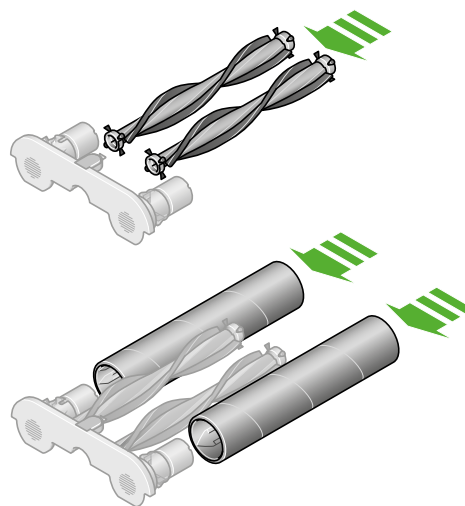
Pull out the end cap with the roller and Debris brush bar.
Remove the from the end cap.



Dispose of used Debris brush bars into your bin

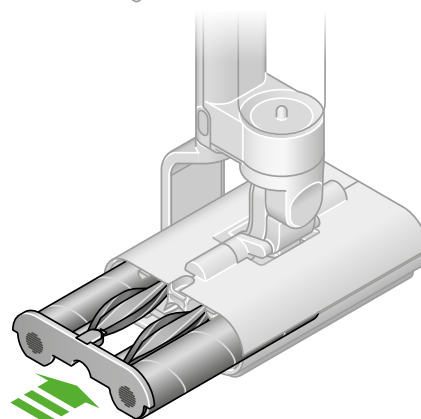


Fit new Debris brush bars onto the end cap



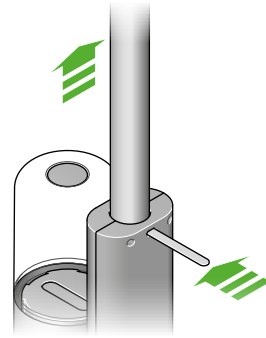
Reattach the rollers

Slide the Debris brush bars and rollers into the cleaner head
until the end cap clicks.



Disassembling your machine

Should you need to store or repackage your machine, detach the wand from the main body, as shown opposite.



Looking after your machine

Day-to-day machine care

To get the best performance from your machine, it's important to clean it regularly.

If your machine is dusty, wipe with a damp lint-free cloth.

Empty both water tanks after each use, and wipe clean.

Empty the Debris tray into a bin, after every use, and rinse clean.

Battery health

For best performance and battery life, use MAX setting only for spot cleaning tough stains.

Your battery is designed to charge on the dock, so return the machine to the dock after use, to help maintain battery life.

Where to find your machine's serial number

The serial number is printed on the main body of the machine, behind the battery pack.

Use the serial number to register your machine.

For more information and support videos for your machine, go online: www.dyson.co.uk/support