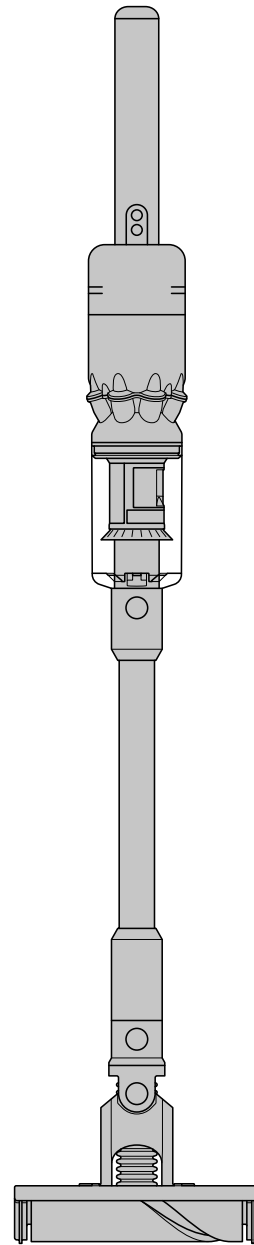


dyson omni-glide

User manual

Dyson
Omni-glide™

Top view of the Dyson
Omni-glide™ machine,
showing cleaner head,
wand, bin and main body.



SV12 JN.00000 PN.000000-00-00
00.00.00 VERSION NO.01

In the box

Getting started

Charging your machine

Changing your click-in battery

Emptying your bin

Cleaning your bin

Washing your filter

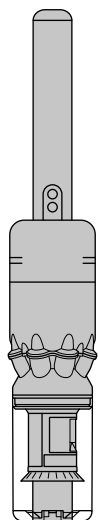
Washing your brush bars

Cleaning your tools

Clearing blockages

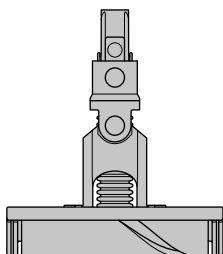
Looking after your machine

In the box



Main body showing the handle and bin attached.

The Dyson omnidirectional Fluffy™ cleaner head with two brush bars and the connector end pointing upwards.



Vacuum cleaner

Dyson omnidirectional Fluffy™ cleaner head

Engineered for hard floors. Glides in all directions - forwards, backwards, even sideways.

The narrow connector end at the top, this connects to the bin and the wider end at the bottom that connects to the cleaner head or tool.



Wand



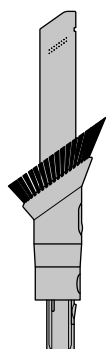
The charger is a one piece unit with the plug, connector end and cable.

Charger

Charges your vacuum with or without a dock.

Some tools may not be included.

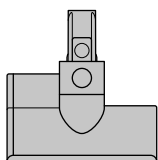
You can buy additional tools at www.dyson.com.



Combination tool

Two tools in one – wide nozzle and brush, for quick switching between cleaning and dusting tasks around your home or car.

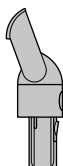
This tool has a combination of brush head and crevice tool together in one unit. The brush head slides down the crevice tool when needed.



Mini motorised tool

Motorised brush bar, concentrated in a smaller head to remove stubborn dirt from mattresses, upholstery and stairs.

A small cleaner head with a body housing the motor and an electrical connector to attach to the wand or directly to the machine.



Worktop tool

Engineered for cleaning kitchen worktops, tables and hard surfaces.

This tool is angled and has a nozzle end.

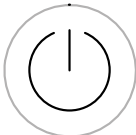


Light pipe crevice tool

Crevice tool with LED lights lets you reach into dark, narrow spaces and see where you're cleaning.

A long tool with an angled end.

Getting started



Power button
We've removed the trigger, so you can swap hands easily while cleaning around obstacles

Location of the power button on the base of the handle of the machine.

MAX



Power modes
Press the button to change power modes.

Eco mode
The optimum balance of power and run time

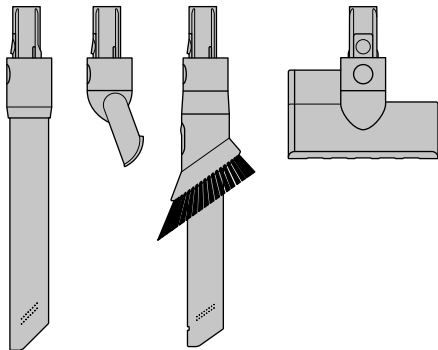
Max mode
Delivers maximum power. For intensive cleaning of ground-in dirt.

Dyson omnidirectional Fluffy™ cleaner head
Engineered for hard floors. Glides in all directions - forwards, backwards, even sideways.

The Dyson Omni-glide™ cordless vacuum cleaner main body with the power button and mode button at the base of the handle and bin with the bin base closed.

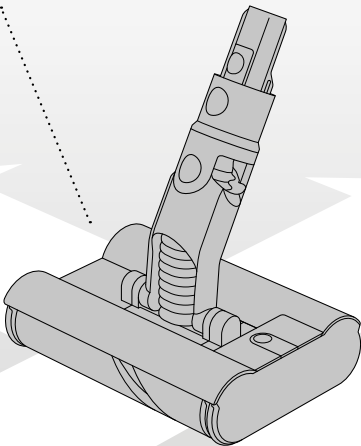
The connection of the wand onto the main body, with the the wand release button aligned with the buttons on the handle of the main body.

Pointers to demonstrate that the tools can be connected directly to the main body or to the end of the wand.



Arrow showing the main body of the Dyson Omni-glide connecting to the Omni-directional fluffy™ cleaner head.

The Dyson Omni directional floor tool showing the release button at the flexible neck, connected to the main body of the cleaner head.



Charging your machine

For the best experience, we recommend fully charging your machine, and any additional batteries, as soon as you open the box and after every clean.

The LED light on the end of the handle will flash when the power is running low and you need to put your battery on to charge.

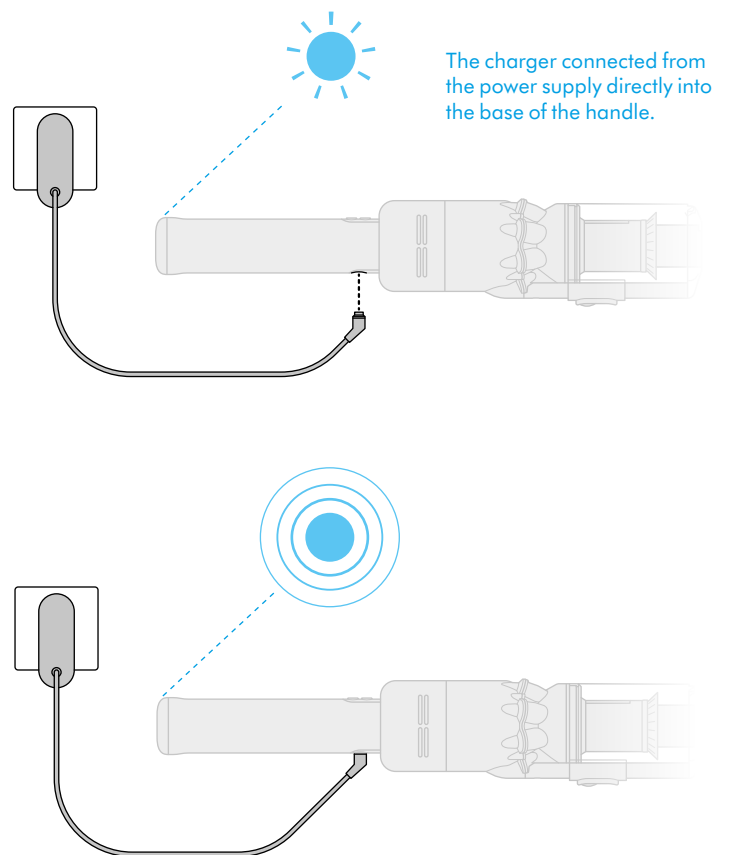
Connect the charger directly to the charging point on the base of the handle of your machine. You can also connect to your dock as shown in the installation instructions supplied with your dock.

The LED light on the end of the handle will pulse with a blue LED light when charging, and the light will go out when fully charged.

It can take up to four hours to fully charge your battery. Your battery has been designed to be left on charge.

Your machine won't operate or charge if the ambient temperature is below 5°C (41°F). This is designed to protect both the motor and battery.

You can help prolong the battery life by leaving your machine to cool down before recharging.



Changing your click-in battery

If you have additional click-in batteries, we recommend that you alternate the batteries to maintain even performance.

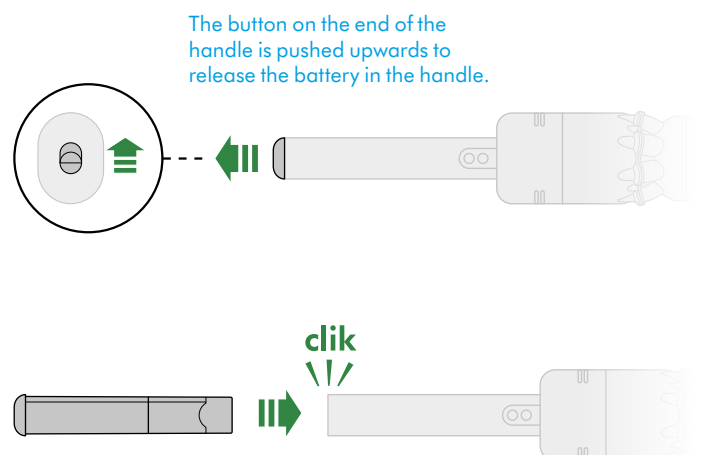
Removing your battery

Push the Battery release button on the handle and slide the battery off your machine.

Charge the battery.

Refitting your battery

Align your battery with the handle and slide it in. Push firmly until it clicks into place.



Emptying your bin

Empty your bin as soon as the dirt reaches the MAX mark. You may need to clean the filter more often if you use your machine with a full bin.

Remove your wand

Press the red wand release button, on the top of the wand, and pull the wand away from the bin.

Release the dirt

Hold your vacuum over a bin.

Push the red bin release button, taking care not to press the power button. The bottom of the bin will open and the shroud will slide down inside the bin, wiping away any dirt.

If the bin doesn't open, check the bin release button is pushed down fully.

To remove the bin for emptying:

If the bin doesn't empty fully, remove the bin and empty the dirt.

Press the red button located on the bin runner to release the bin and slide your bin off the runner.

Minimise dust contact

Cover your bin tightly in a dust proof bag while you empty. Remove the bin carefully, seal the bag tightly and dispose.

Reassemble your machine

If you have removed your bin, slide it back on to the runner. Make sure that the bin and lid are both securely in position.

Push the bin base upwards until the bin and lid both click into place. Reconnect the wand.

The MAX mark on the bin of the machine, showing that the dirt should not be filled over the Max mark when the machine is at the angle of normal use.

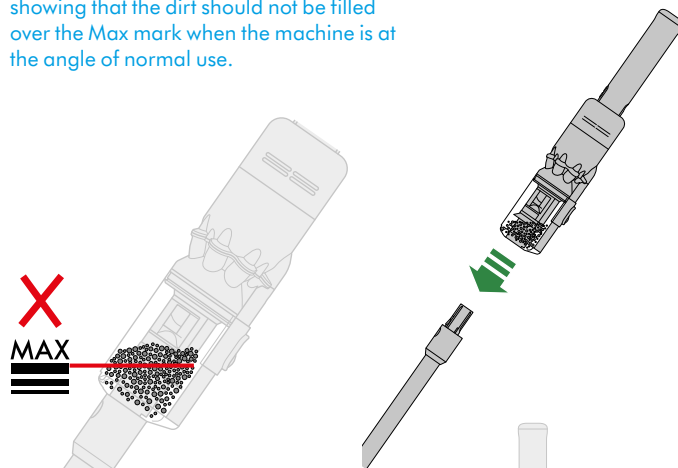
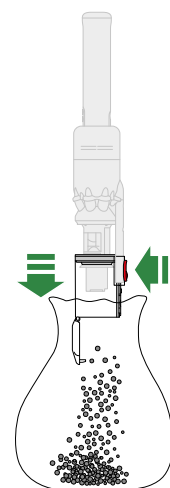
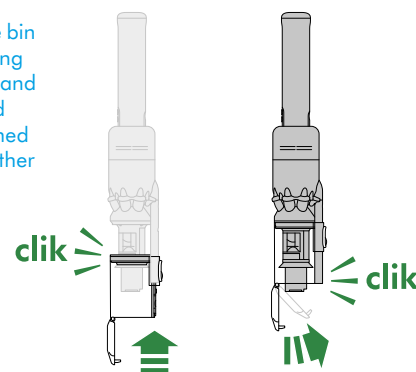


Illustration of the bin being emptied into a bag with images demonstrating to take care not to press the trigger when emptying the bin.



Two images of the bin with arrows showing the bin lid closing and a click symbol and the bin being pushed upwards with another click symbol.



Cleaning your bin

Don't put any part of your machine in a dishwasher or use detergents, polishes or air fresheners.

Clean your bin

If it is necessary to clean your bin, empty it as shown in the 'Emptying your bin' section.

Press the red button located on the bin runner to release the bin and slide your bin off the runner.

Only clean your bin with a damp cloth.

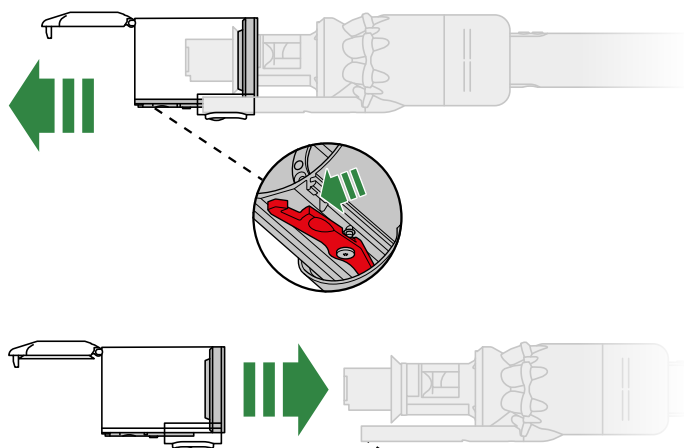
Make sure that the bin and seals are completely dry before replacing.

Replace your bin

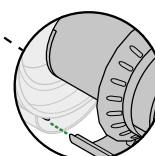
Insert the spine on to the bin runner.

Close your bin by pushing the bin base upwards until the bin and bin base click into place.

The bin being removed and the location of the bin release lever on the underside of the bin runner.



The bin being pushed back into position on the bin runner.



Washing your filter

Wash your filter at least once a month to maintain the best performance.

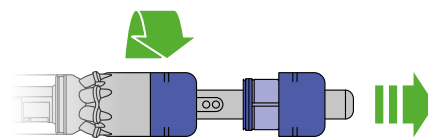
Make sure the filter is completely dry before refitting.

Twist off your filter

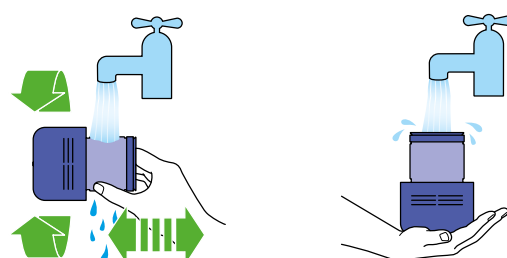
Don't put any part of your machine in a dishwasher or use detergents, polishes or air fresheners.

Turn your filter anti-clockwise and pull it away from your machine.

Before washing your filter, tap it gently over a bin to remove any loose dust and debris.



Filter held in upright position, with the wider end in the palm of a hand. Water running from a tap into the narrower end.



Wash your filter

Wash the outside of the filter, rubbing with your fingers to remove the dirt.

Carefully rinse the inside filter, without allowing water to fill the filter.

Repeat these steps until the water runs clear.

Shake and dry

Empty the filter and shake firmly to remove excess water.

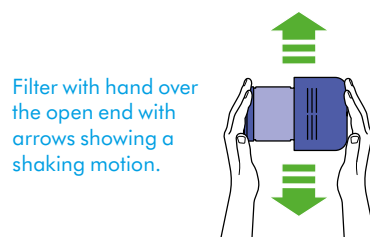
Keep shaking until there's no water coming from the filter.

Place your filter end up, as shown.

Leave your filter to dry for at least 24 hours in a well-ventilated, warm place.

Don't dry your filter in a tumble dryer, microwave or near a naked flame.

Important: your filter must be completely dry before you put it back into the machine. Your machine could be damaged if used with a damp filter.



Filter with hand over the open end with arrows showing a shaking motion.

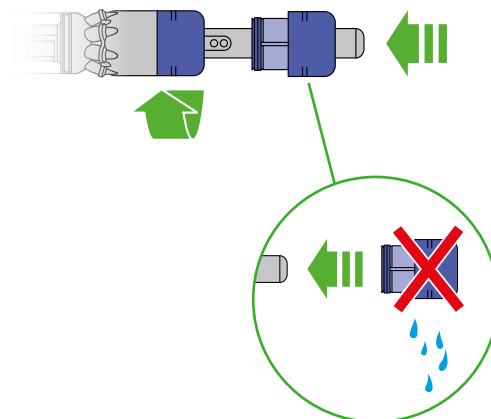


The filter is left to dry with the pleated filter end facing upwards.

Refit your filter

To refit your filter, slide it onto the handle and turn it clockwise until it clicks into place.

Your filter may need more frequent washing if you vacuum fine dust, use Max mode frequently or use with the bin full.



Washing your brush bars

To maintain optimum performance, check and wash the brush bars regularly.

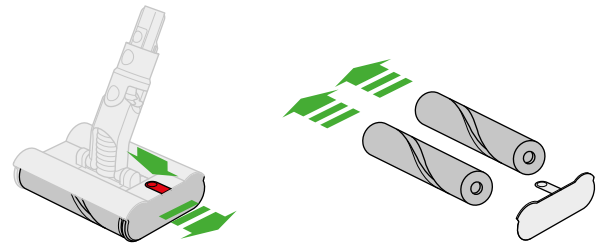
Remove brush bars

Don't put any part of your machine in a dishwasher or use detergents, polishes or air fresheners.

Press the cleaner head release button to remove it from the wand.

Pull the brush bars off the end cap and put the end cap to one side, don't wash it.

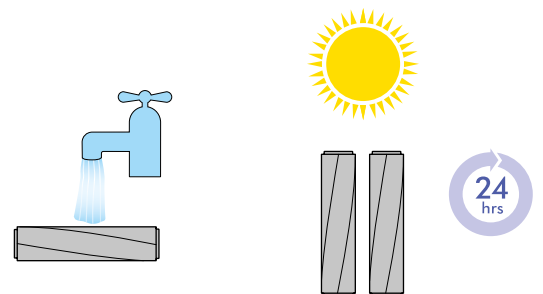
The brush bar release button is located on the top of the cleaner head and the brush bars slide out of the same end.



Wash and dry brush bars

Hold your brush bars under cold tap water and gently rub to remove any lint or dirt. Keep washing until the water runs clear.

Stand the brush bars upright and leave for at least 24 hours to dry.



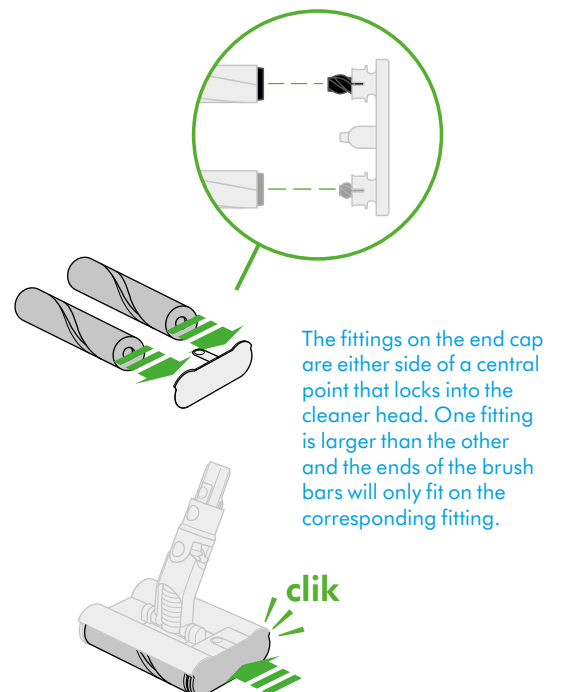
Replace your brush bars

Make sure your brush bars are completely dry before refitting.

Each brush bar is engineered to correspond to a specific position on the end cap. It is important that both brush bars are fitted in the correct position. Slide the assembled brush bars back into the cleaner head.

Push the end cap until it clips securely back into the closed position.

The cleaner head housing is not washable and should only be wiped over with a damp lint-free cloth.

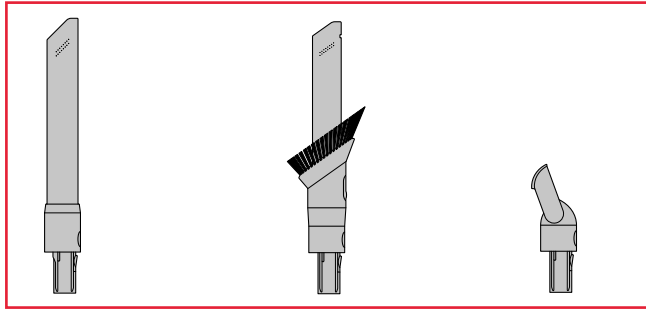


Cleaning your tools

Don't put any part of your machine in a dishwasher or use detergents, polishes or air fresheners.

Wipe with a damp, lint-free cloth, without touching the connector end.

Make sure your tools are completely dry before using.



Light pipe crevice tool

Combination tool

Worktop tool

Clearing blockages

If your machine detects a blockage, the motor will pulse six times. You won't be able to use your machine until the blockage has been cleared.

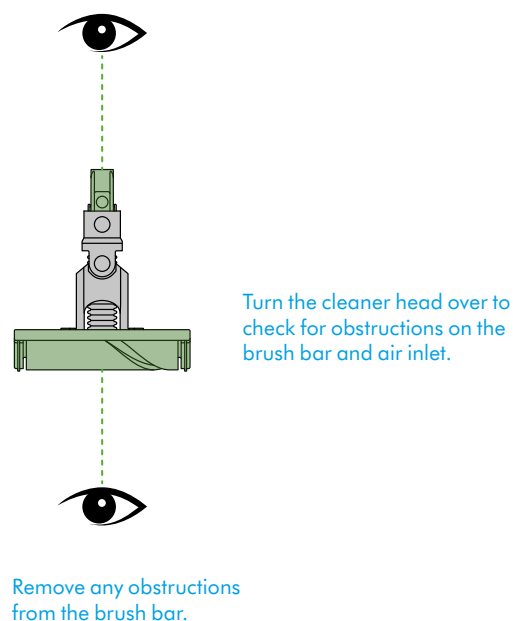
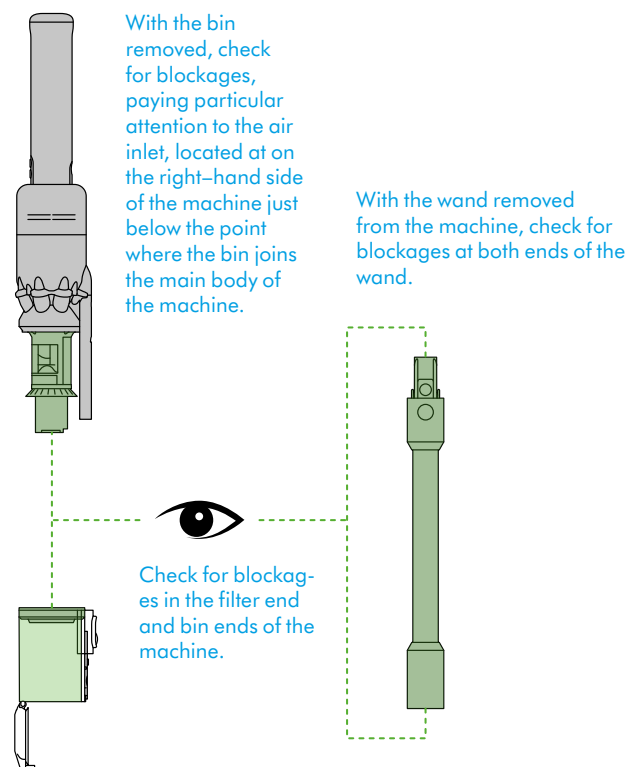
If you try to use your machine when the motor is pulsing, it will automatically cut out.

Leave your machine to cool down before looking for blockages and, for your safety, take care not to touch the power button.

Disconnect your machine from the charger before looking for blockages. Be careful not to touch the power button and be aware of sharp objects.

Leave your machine to cool down before looking for blockages.

Don't use your machine when looking for blockages as this could cause injury.



Looking after your machine

To always get the best performance from your machine, it's important to clean it regularly and check for blockages.

Look after your machine

If your machine is dusty, wipe with a damp lint-free cloth.

Check for blockages in the cleaner head, tools and main body of your machine.

Wash your filter regularly and leave to dry completely.

Don't use detergents or polishes to clean your machine.

Look after your battery

To get the best performance and life from your battery, use Eco or Med mode.

Your machine won't operate or charge if the ambient temperature is below 5°C(41°F). This is designed to protect both the motor and battery.

Your serial numbers

You can register your machine using the serial number found on the bottom of your machine.

You can find your serial numbers on your machine, battery and charger. Use your serial number to register.