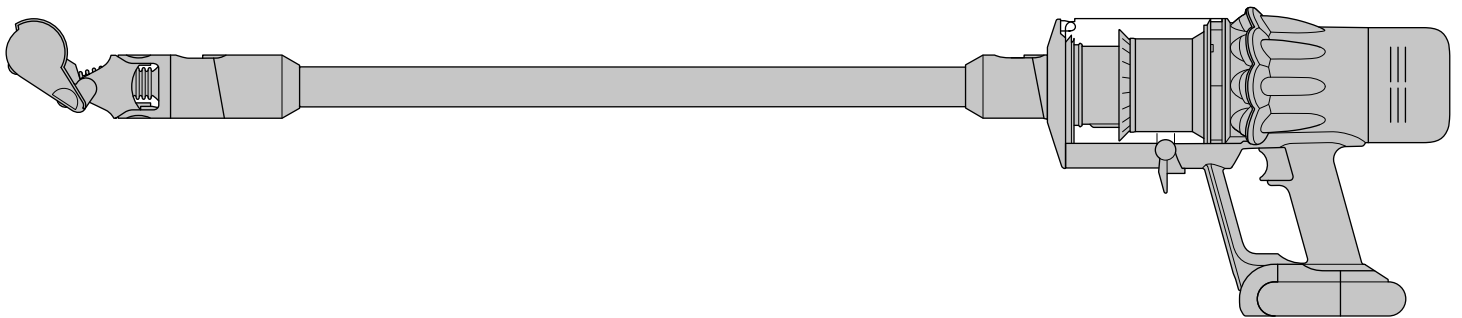


dyson digital slim

User manual



In the box

Assembling your machine

Getting started

Caring for your floors

The LCD screen

Charging your machine

Changing your click-in battery

Emptying your bin

Washing your bin

Washing your filter

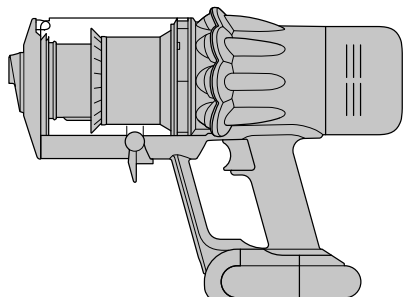
Washing your brush bar

Washing your powered tools

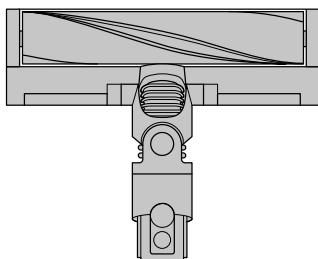
Washing your non-powered tools

Clearing blockages

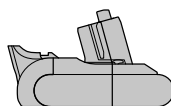
In the box



Vacuum cleaner main body

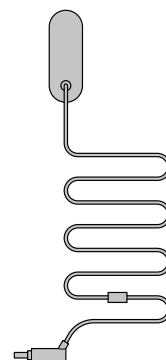


Slim Fluffy™ cleaner head
Soft woven nylon and anti-static carbon fibre for hard floors. 40% smaller and lighter than a standard Fluffy™ cleaner head.

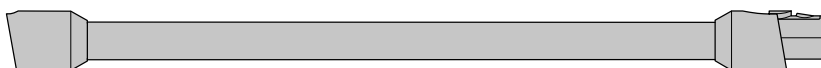


Click-in battery
Remove and replace at the press of a button to double your run time.¹

1. Click-in battery is inserted in the Main Body Unit

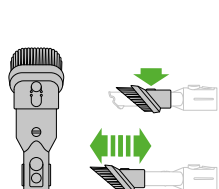


Charger
Charges your vacuum with or without the dock.



Wand

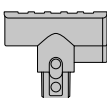
Some tools may not be included.
You can buy additional tools at [Dyson.com](https://www.dyson.com)



Combination tool
Two tools in one – wide nozzle and brush, for quick switching between cleaning and dusting tasks around your home or car.



Crevice tool
Engineered for precise cleaning around tricky edges and into hard-to-reach narrow spaces.



Mini motorised tool
Motorised brush bar, concentrated in a smaller head to remove stubborn dirt from mattresses, upholstery and stairs.



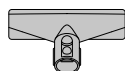
Soft dusting brush
For vacuum-assisted dusting on screens and surfaces.



Stubborn dirt brush
Stiff nylon bristles dislodge ground-in dirt from coarse carpets, high traffic areas and car interiors.



Low-reach adaptor
Bends so you don't have to. Engineered to clean further under low furniture by adjusting the wand angle up to 90°.



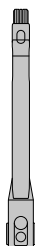
Mattress tool
Removes dust, dirt and allergens from mattresses and upholstery.



Up-top adaptor
Bends and locks at different angles. Fits any compatible tool for effective cleaning in hard-to-reach high areas of your home.



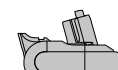
Extension hose
Adds up to 61cm of flexible reach to any tool attachment, to clean up high or down low in your home or car.



Flexi crevice tool
Extends and bends to reach awkward narrow spaces where dust settles around your home and car.



Light pipe crevice tool
Crevice tool with LED lights lets you reach into dark, narrow spaces and see where you're cleaning.

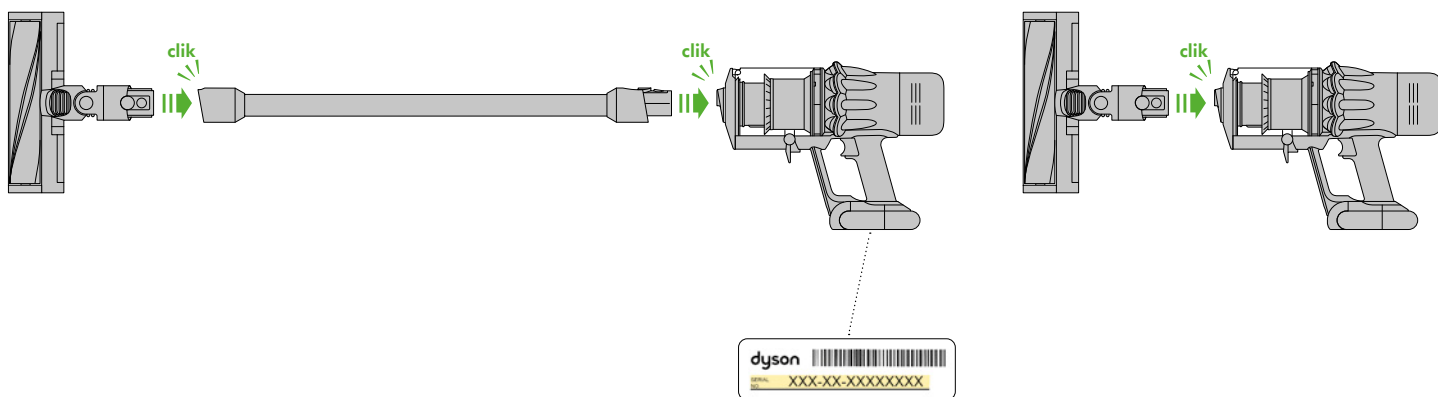


Additional click-in battery



Wand clip

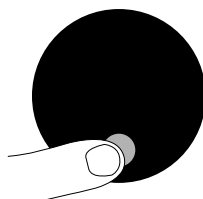
Assembling your machine



You can register your machine using the serial number found on the bottom of your machine.

Getting started

Fully charge your machine before using for the first time.



Power modes

Your machine has three power modes for different tasks. Change power modes quickly using a single button.



Setting up your language

To set up your language, tap the button to activate the screen. Tap the button to scroll through the language list to your preferred language. Press and hold the button until the countdown ends to set your language.

A green tick will appear on the screen to show your language selection is complete.

To cancel your selection, release the button during the countdown.

You can access a full list of available languages by selecting 'More+' from the language list.



Maximum run time for longer cleans all around your home.



The optimum balance of power and run time.



For intensive spot cleaning.

Caring for your floors

Check that the underside of the cleaner head or tool is clean and free from any objects that may cause damage.

Before vacuuming your flooring, check the manufacturer's recommended cleaning instructions.

This machine is designed for use on hard floors. The brush bar on your machine can damage certain flooring. Some rug materials may fuzz if a rotating brush bar is used when vacuuming. If this happens, we recommend vacuuming without the motorised floor tool and consulting with your flooring manufacturer.

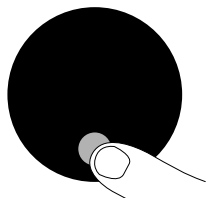
The LCD screen

The LCD screen shows current performance, including selected cleaning mode, remaining run time, filter maintenance and blockage reports.

Settings menu

Control the settings on your machine using the button.

To enter the settings menu, press and hold the button until the menu screen appears. Tap to scroll through the options available.



Change language



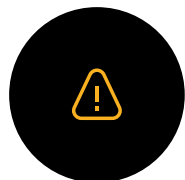
To change the language on your screen, press the button and hold until the language list appears. Release the button.

Tap the button to scroll through the language list to your preferred language. Press and hold the button until the countdown ends.

A green tick will appear on the screen to show your language selection is complete.

To cancel your selection, release the button during the countdown.

Change alert settings



You can turn the alert motor pulse off. Your motor will no longer pulse but alert information will continue to be displayed on the LCD screen when your machine needs your attention.

Turning off Alerts will not turn off the blockage alert pulsing. This is to ensure you clear any blockages, preventing damage to your machine.

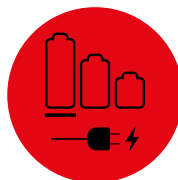
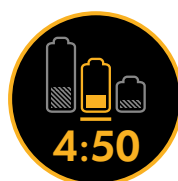
Tap to scroll through the settings menu. Select the 'Alerts' option.

Scroll to select on or off. Hold the button until the countdown ends and a tick appears on the screen. To cancel your selection, release the button during the countdown.

Exit settings menu

To exit the settings menu. Tap to scroll through the selection menu. Select 'Exit menu'.

Run time countdown



When the battery needs charging, your machine will pulse three times and a low run time icon will appear on the screen.

When your battery is empty, a red warning icon will appear on the screen.

Battery health



To get the best performance and life from your battery, use Eco or Med mode.

Alerts

When the battery needs charging, your machine will pulse three times and a red warning icon will appear on the screen.

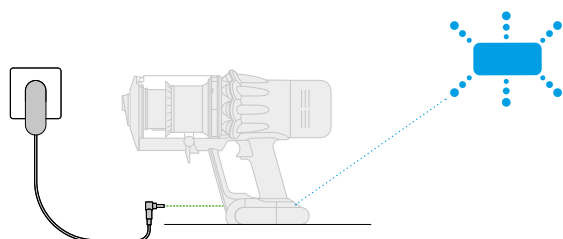
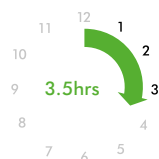
The alerts you might see are:

Filter – the filter isn't fitted correctly, or needs cleaning.

Blockage – your machine has a blockage that needs removing.

Charging your machine

For the best experience, we recommend fully charging your machine, and any additional batteries, as soon as you open the box and after every clean. This is because the battery and monitoring system's algorithm 'learns' over time, and fully charging your batteries helps it to more accurately calculate and display remaining run time.



Connect the charging cable directly to your machine or into the dock.

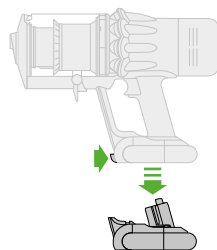
The blue LEDs on either side of the battery will flash as your machine charges and the LCD screen will show a full battery icon when fully charged and ready to use.

Your machine won't operate or charge if the ambient temperature is below 5°C (41°F). This is designed to protect both the motor and battery.

You can help prolong the battery life by leaving your machine to cool down before recharging.

Changing your click-in battery

If you have additional click-in batteries, we recommend that you alternate the batteries to maintain even performance.

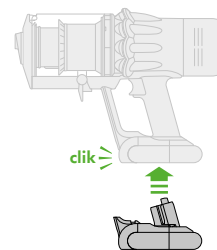


Removing the battery

Hold your hand under the battery to support it.

Press the red battery release button and slide the battery off the handle.

Charge the battery.

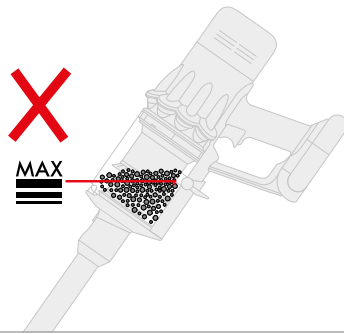


Re-fitting the battery

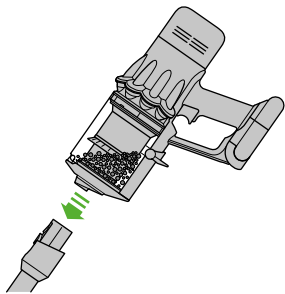
Slide the battery onto the handle until it clicks securely in place.

Emptying your bin

Empty your bin as soon as the dirt reaches the Max mark. You may need to clean the filter more often if you use your machine with a full bin.



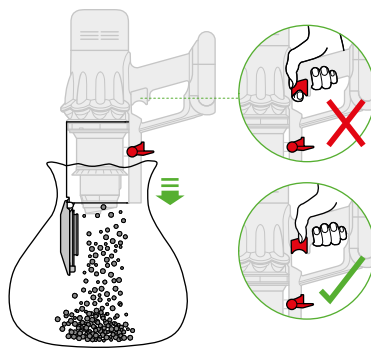
1



Press the red wand release button and pull the wand away from the bin.

Don't pull the trigger when emptying the bin.

2

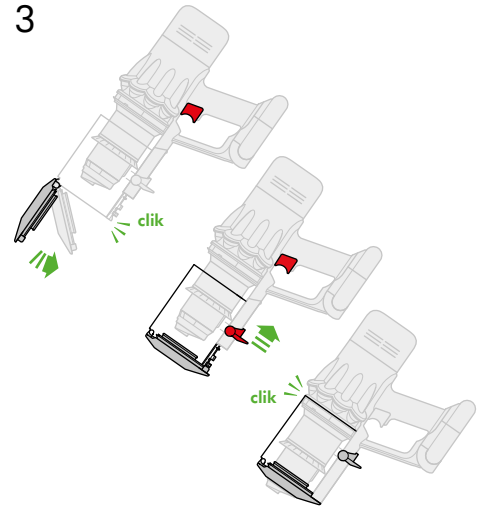


Hold your vacuum over a bin.

Push the red bin release button, taking care not to pull the trigger. The bottom of the bin will open and the shroud will slide down inside the bin, wiping away any dirt.

If the bin doesn't open, check the bin release button is pushed down fully.

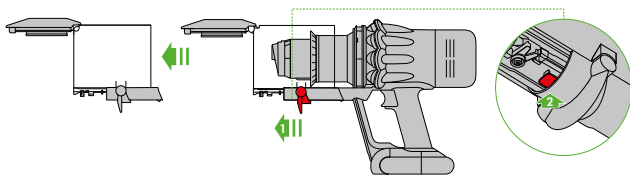
3



To close the bin, push the bin base upwards until the bin and lid both click into place. Reconnect the wand.

To reduce contact with dust/allergens, put your bin in a dust-proof bag when emptying it. Remove the clear bin carefully and seal the bag tightly. Reconnect the wand.

Washing your bin

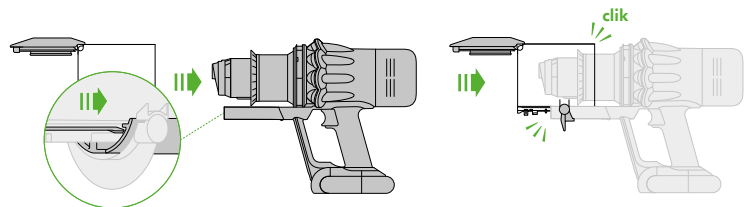


Don't put any part of your machine in a dishwasher or use detergents, polishes or air fresheners.

Empty your bin before cleaning it.

Press the red button on the bin runner to release the bin, then slide the bin off the runner.

Rinse your bin under a cold tap. Wipe with a dry lint-free cloth to remove any debris.



Make sure that all parts of your bin are completely dry before refitting it.

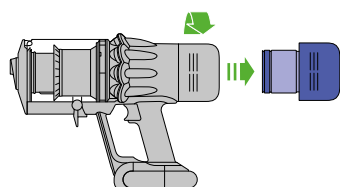
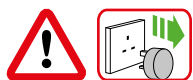
Slide the bin onto the runner.

Push the bin base upwards until your bin clicks into place and the bin base is securely closed.

Washing your filter

Wash your filter at least once a month or when the filter icon is displayed on the screen.

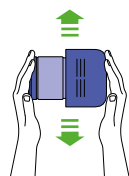
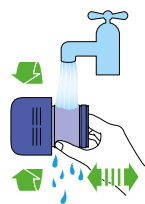
1



Don't put any part of your machine in a dishwasher or use detergents, polishes or air fresheners.

Turn your filter anti-clockwise and pull it away from your machine.

2



Before washing your filter, tap it gently over a bin to remove any excess dust and debris.

Wash your filter with cold tap water.

Wash the outside of the filter, rubbing with your fingers to remove the dirt.

Place your hand over one end of the filter, fill the filter with water and place your other hand over the open end. Shake to wash the inside of the filter.

Repeat these steps until the water runs clear.

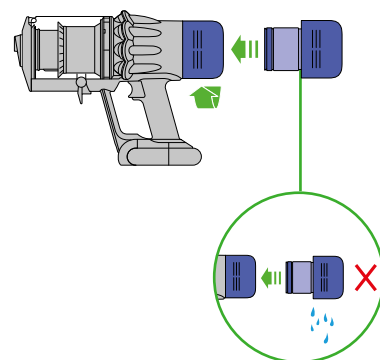
3



Shake your filter to remove any excess water and place it with the foam end facing upwards.

Leave your filter for at least 24 hours to dry completely and make sure it is completely dry before refitting.

4



To refit your filter, position it on the main body of your machine and turn it clockwise until it clicks securely into place.

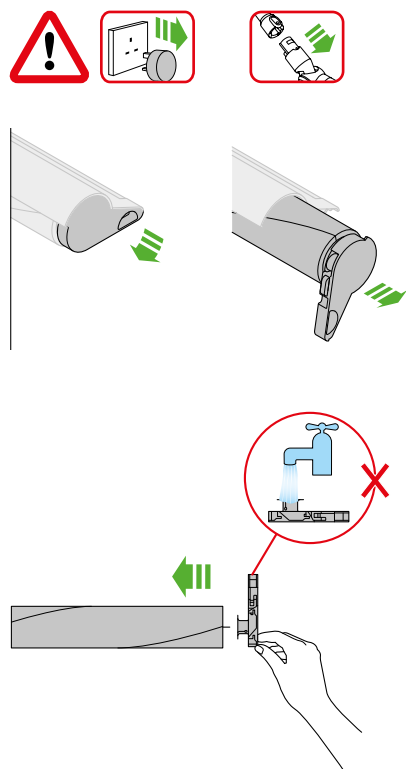
Your filter may need washing more often if you vacuum fine dust or use Boost mode frequently.

Washing your brush bar

To maintain optimum performance, check and wash your brush bar regularly.

Make sure your machine is disconnected from the charger and take care not to touch the trigger.

1



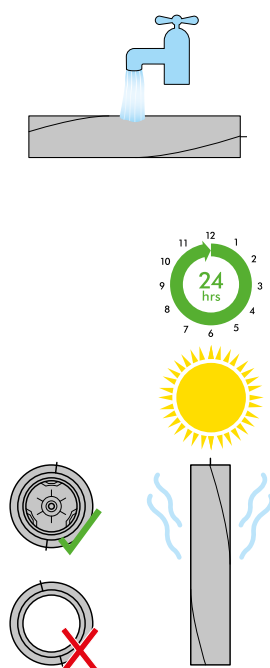
Don't put any part of your machine in a dishwasher or use detergents, polishes or air fresheners.

Press the cleaner head release button on the end of the wand. Place the cleaner head upside down.

Push the end cap up fully and pull the brush bar out of the cleaner head.

Twist the end cap and remove it from the brush bar. Don't wash the end cap.

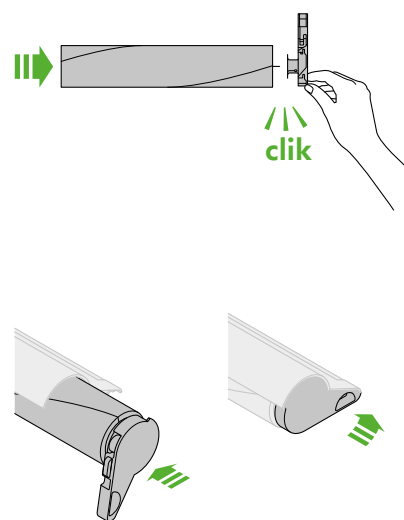
2



Hold your brush bar under cold tap water and gently rub to remove any lint or dirt.

Stand the brush bar upright and leave for at least 24 hours to dry completely. Make sure your brush bar is completely dry before refitting.

3

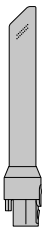


Reattach the end cap to the brush bar so that it's in the open position.

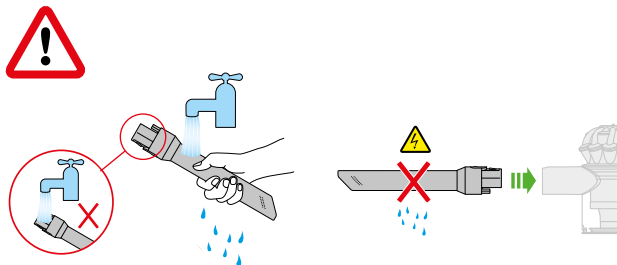
Slide the brush bar back onto the cleaner head.

Push the end cap until it clips securely back into the closed position.

Washing your powered tools



Light pipe
crevice tool



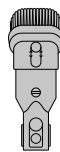
Don't put any part of your machine in a dishwasher or use detergents, polishes or air fresheners.

Wash with cold tap water, taking care not to get water on the connector end.

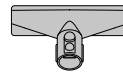
Make sure the tool is completely dry before using.

Your mini-motorised tool is not washable. Wipe over with a damp lint-free cloth.

Washing your non-powered tools



Combination
tool



Mattress
tool



Stubborn
dirt brush



Crevice
tool



Flexi
crevice
tool



Low-reach
adaptor



Soft
dusting
brush



Up-top
tool



Extension
hose

Don't put any part of your machine in a dishwasher or use detergents, polishes or air fresheners.

Wash with cold tap water.

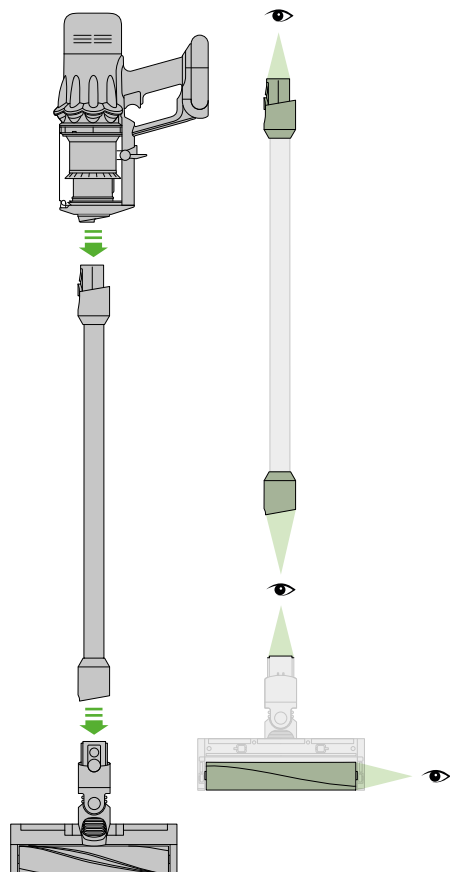
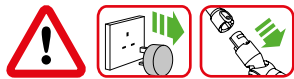
Make sure the tool is completely dry before using.

Clearing blockages

If your machine detects a blockage, the motor will pulse seven times and a blockage icon will light up on the screen. You won't be able to use your machine until the blockage has been cleared.

If you try to use your machine when the motor is pulsing, it will automatically cut out.

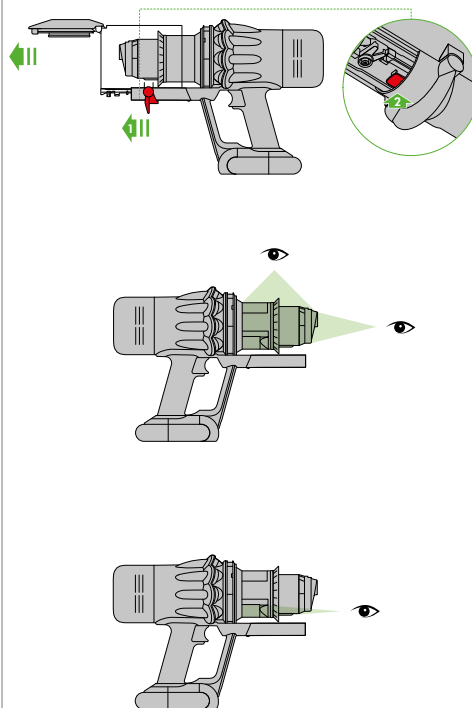
1



Be careful of sharp objects that may be blocking your machine.

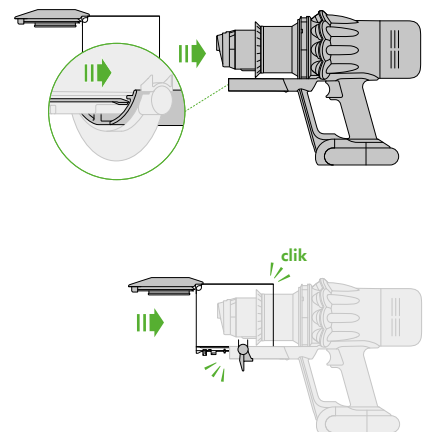
Check for blockages in the cleaner head, and, if needed, follow the instructions for removing the brush bar.

2



Remove the bin and check for blockages in the main body of your machine.

3



Make sure any blockages are completely cleared and all parts are fitted before using your machine.