

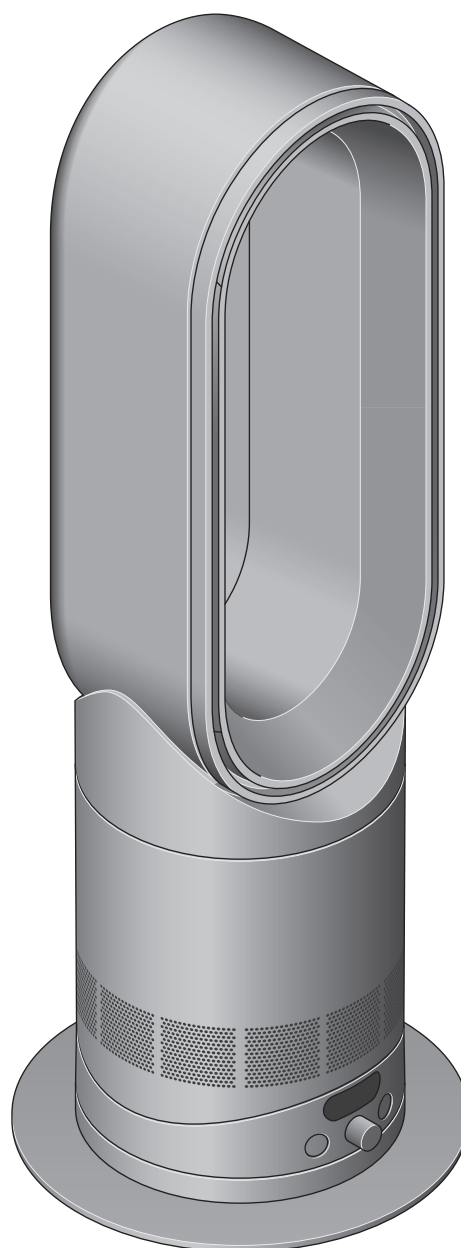
hot+cool

Hot+Cool HF1 Remote
Link Pre-heat logo

remote link pre-heat

User manual

Front view of the Dyson
hot+cool HF1 remote link
pre-heat heater and cooling
fan, showing the loop
amplifier with the screen and
product controls below.



Contents

In the box

Assembling your machine

Product controls

Connecting to the MyDyson™
app via Bluetooth®

Connecting to your smart home

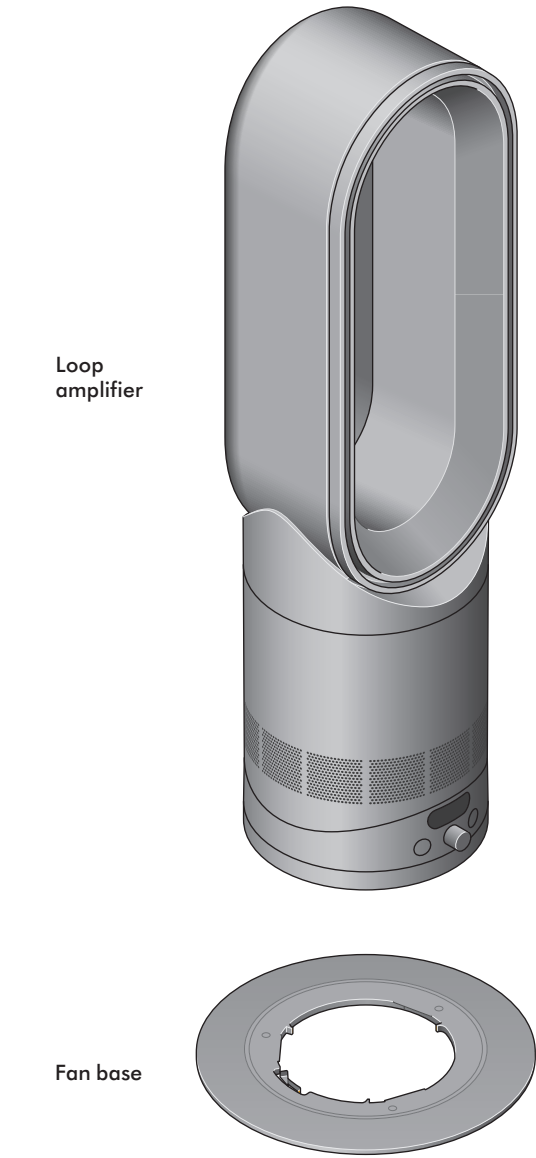
Power, Continuous monitoring

Cleaning your machine

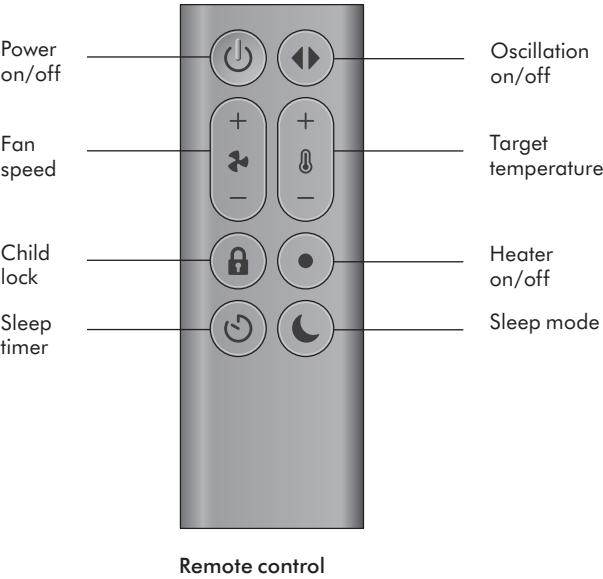
Clearing blockages

Remote control

In the box

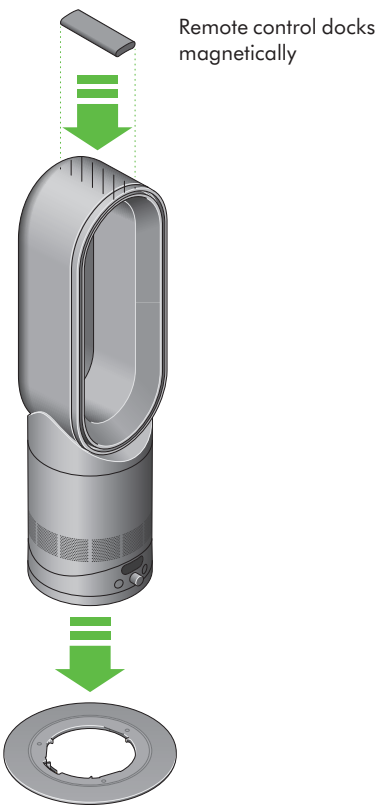


The layout of the remote control. The power button is on the top left, then going downwards is the fan speed toggle button, child lock button, and sleep timer button at the bottom. On the top righthand side is the oscillation button, then going downwards is the target temperature toggle button, the heater on/off button, and Sleep mode button at the bottom.

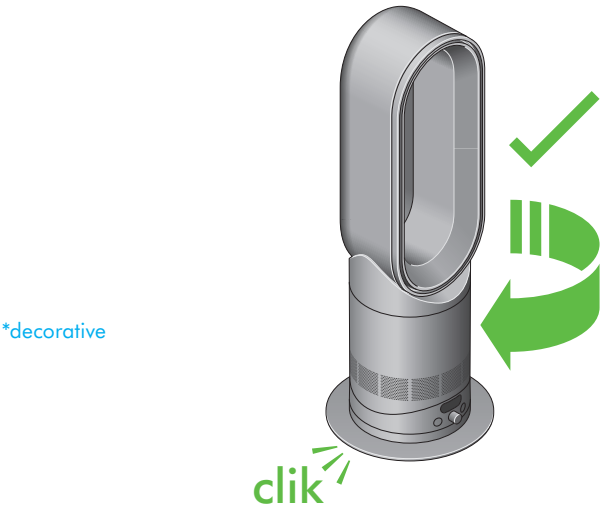


Assembling your machine

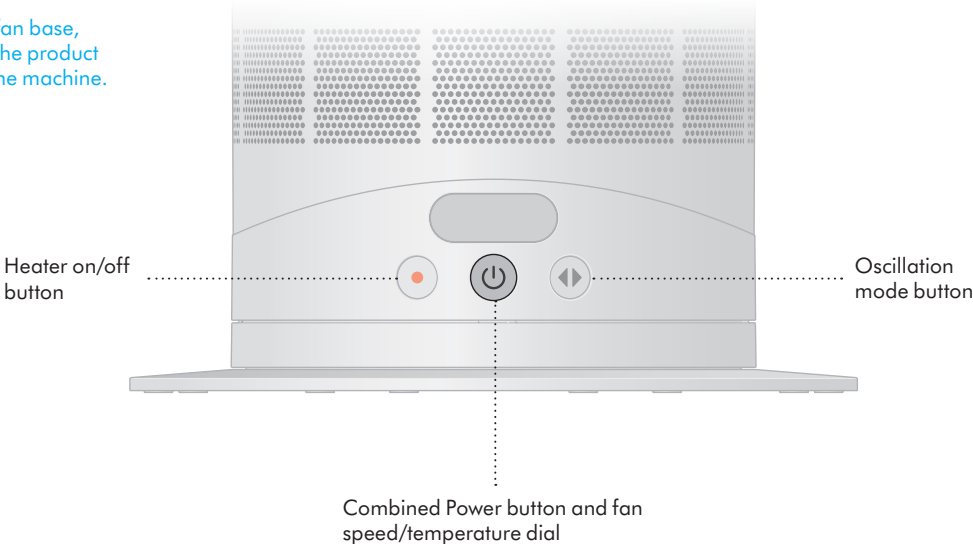
Step 1
Lower the loop amplifier onto the base, aligning the arrows.



Step 2
Once aligned, turn the loop amplifier clockwise to lock.



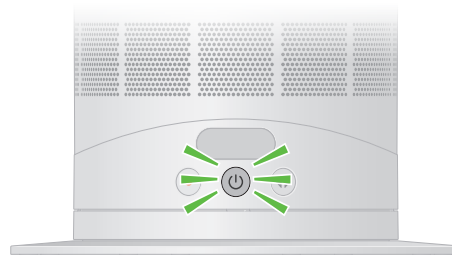
The heater and cooling fan base,
showing the location of the product
controls on the base of the machine.



Product controls

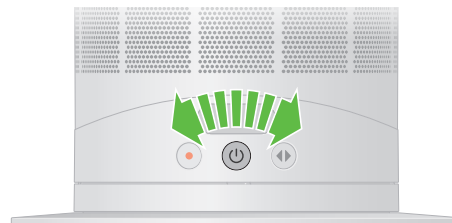
Power

Press the combined Power button and fan speed/temperature dial, situated in the middle of the controls, to start/stop your machine.



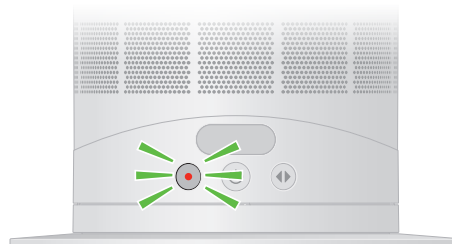
Fan speed control

Turn the combined Power button and fan speed/temperature dial to the right to increase fan speed, turn it to the left to decrease fan speed.



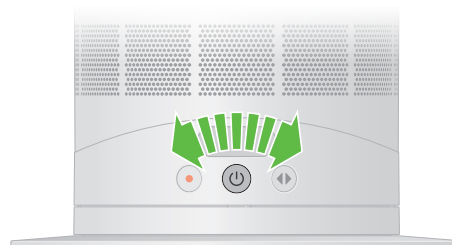
Heater on/off

Press the button on the left to turn the heater on. Press and hold the button to turn the heater off.



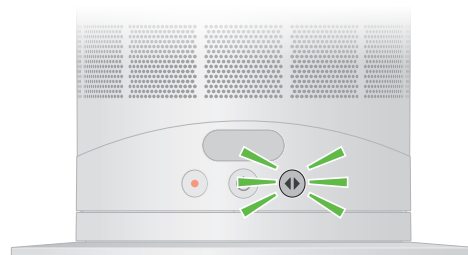
Temperature control

Turn the combined Power button and fan speed/temperature dial to the right to increase air temperature, turn it to the left to decrease air temperature.



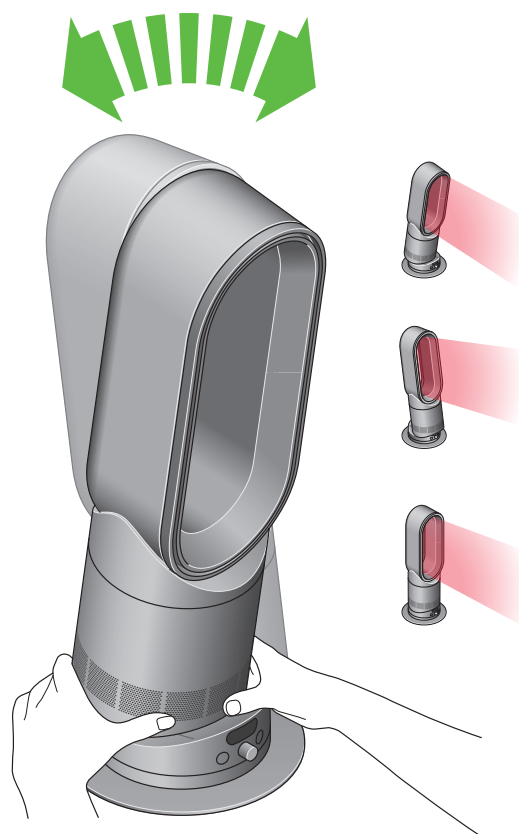
Oscillation

Press the button on the right to cycle through oscillation angles.
Choose from 15, 40 or 70 degrees.



Manual tilt

Carefully hold the base and the bottom of the air loop amplifier. Tilt forward or backward for the required airflow angle.



Connecting to the MyDyson™ app via Bluetooth®

Take full control with the MyDyson™ app and access step-by-step setup and support, control how and when your heater fan operates, and automatically keep up to date with the latest software updates.

Download the MyDyson™ app from the App Store or Google Play.

Open the app and follow the on-screen instructions to create a new account.



[MyDyson logo.](#)

Apple, the Apple logo, and Siri are trademarks of Apple Inc. App Store is a service mark of Apple Inc.

Google Play, the Google Play logo, Google Assistant are trademarks of Google LLC. Android and the Android logo are trademarks of Google LLC.

The Bluetooth® word mark and logos are registered trade marks owned by the Bluetooth SIG, Inc. and any use of such marks by Dyson is under license.



[Download on the App Store](#)

The Android robot is reproduced or modified from work created and shared by Google and used according to terms described in the Creative Commons 3.0 Attribution License.



[Available on Android stores](#)

App functionality may vary per market. Requires Wi-Fi and app enabled device. Standard data and messaging rates may apply. Requires iOS version 15 or above, or Android version 8 or above. Your mobile device must have Bluetooth® 4.0 support.

Connecting to your smart home

Using Amazon Alexa

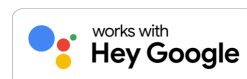
Ask Alexa to enable the Dyson skill, to control your Dyson heater fan. And set a routine that automates how your machine works with other devices in your home.



[works with amazon alexa](#)

Using Google Assistant

Control all of your connected fans with Google or set a routine to automate how your machine works with other devices in your home. Just say "Hey Google" to get started.



[Works with Hey Google](#)

Using Siri

Connect your Dyson machines to Siri Shortcuts and you'll be able to control them with your voice, on your Apple device.



[Siri](#)

Refer to the MyDyson™ app for compatible smart home devices and voice services.

Amazon, Alexa, Amazon Echo and all related logos are trademarks of amazon.com, Inc. or its affiliates.

Power, Continuous monitoring

Power on/off

Press the Power on/off button on your Dyson heater fan or remote control to stop your machine. It will continue to monitor the temperature.

Continuous Monitoring

Continuous monitoring is turned off by default. Once turned on, it will remain active until you turn it off again.

With continuous monitoring turned on, your Dyson heater fan will gather temperature information. This is displayed on the LCD screen and in the MyDyson™ app.

Go to your machine's settings in the MyDyson™ app to turn on continuous monitoring.

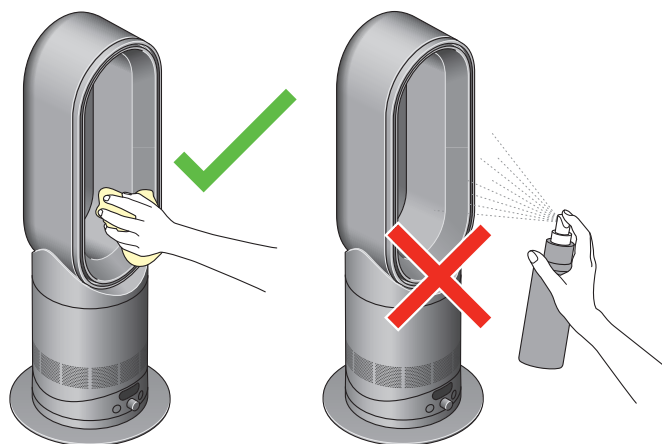
Wi-Fi Connectivity

Wi-Fi is on by default. To turn the Wi-Fi on or off, press and hold the Power on/off button on your machine for five seconds.

App functionality may vary per market. Requires Wi-Fi and app enabled device. Standard data and messaging rates may apply. Requires iOS version 15 or above, or Android version 8 or above. Your mobile device must have Bluetooth® 4.0 support. The Bluetooth® word mark and logos are registered trademarks owned by the Bluetooth SIG, Inc. and any use of such marks by Dyson is under license.

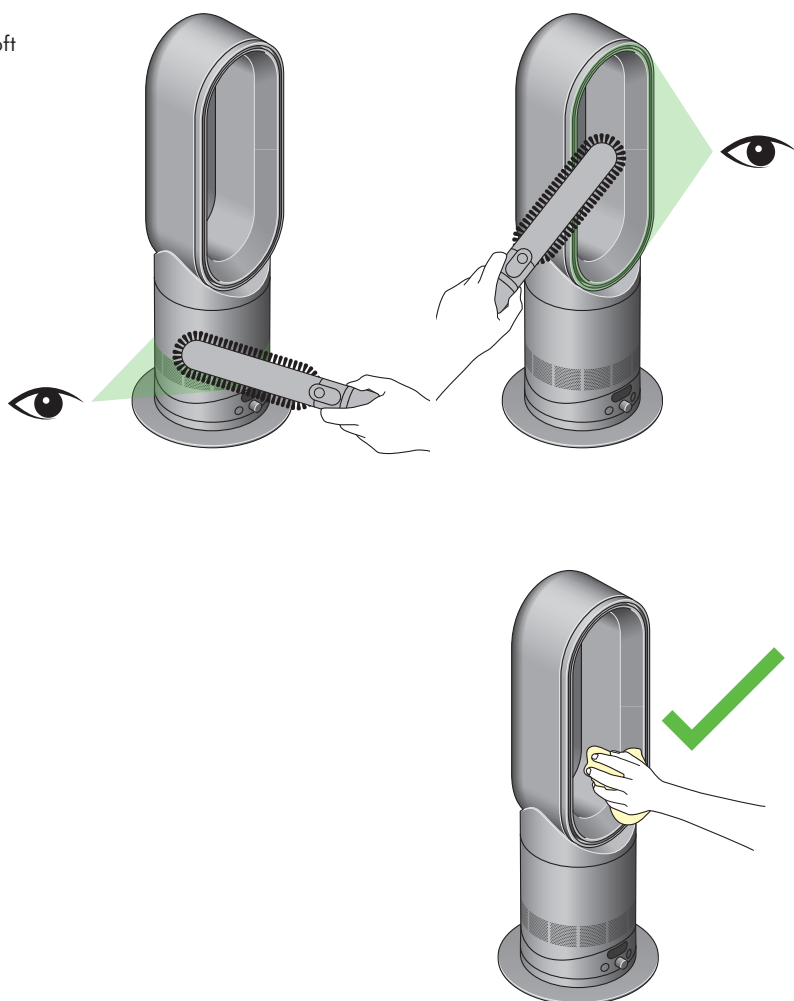
Cleaning your machine

Unplug your machine before cleaning. To clean, wipe with a dry or damp cloth. Do not use detergents or polishes to clean the appliance.



Clearing blockages

Look for blockages in the air inlet holes. Use a soft brush to remove debris. Look for blockages in the small aperture inside the loop amplifier. Use a soft brush to remove debris.



Remote control

Use your remote control to operate your machine from a distance.
wThe remote is curved and magnetised to store neatly on your machine.

Power button
Press the Power button to start or stop your machine.

Fan speed
Press the Fan speed button to increase and decrease the airflow speed.

Child lock
Press the Child lock button to disable/enable all controls on the machine

Sleep timer
Press the Sleep timer button to scroll through the timer options.

Oscillation
Press the Oscillation button to circulate air around the room and scroll through the oscillation angles from 0° to 70°.

Temperature control
Press the temperature control button to increase or decrease your desired air temperature

Heater on/off
Press the button to turn the heater on. Press and hold the button to turn the heater off.

Sleep mode
Press the button to activate Sleep mode. Your fan will will blow air at a lower speed and with its LCD screen dimmed.



The layout of the remote control. The power button is on the top left, then going downwards is the fan speed toggle button, child lock button, and sleep timer button at the bottom. On the top righthand side is the oscillation button, then going downwards is the target temperature toggle button, the heater on/off button, and Sleep mode button at the bottom.