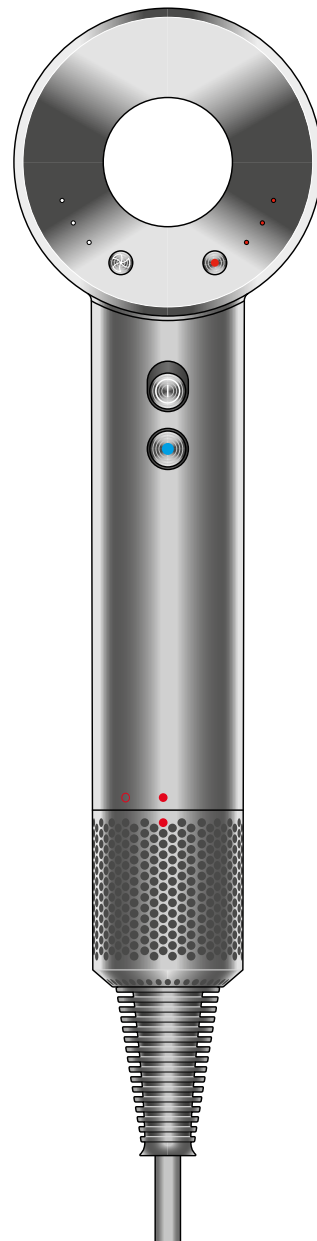


## User manual



---

In the box

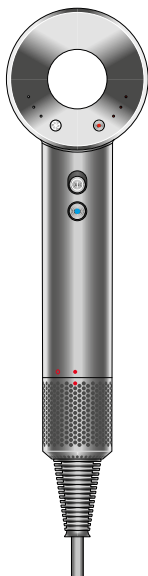
Getting started

LEDs

Using your hair dryer

Regular filter cleaning

# In the box

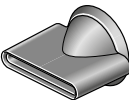


View of the back of the Dyson Supersonic hairdryer showing the flow button on the left and the temperature button on the right. The power button and cold shot buttons shown on the handle. The filter cage located at the bottom of the handle.

Dyson Supersonic™ hair dryer

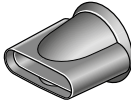
Some attachments may not be included.

You can buy additional attachments at [www.dyson.com.sg](http://www.dyson.com.sg)



Styling concentrator

Attachment with a flattened, flared nozzle.



Smoothing nozzle

A flat, straight nozzle.



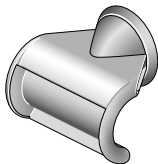
Gentle air attachment

A flat nozzle with a rippled texture.



Diffuser

A large, wide, circular nozzle with prongs on the inner surface.



Flyaway attachment

A flat, hook-shaped nozzle.

# Getting started

View of the back of the Dyson Supersonic hairdryer showing the flow button on the left with LED lights and the temperature button on the right, also with LEDs. The power button and cold shot buttons shown on the handle.

**Airflow control**  
3 precise settings.

The airflow control button is located on the back, left hand side of the cylindrical head of the hair dryer.

**Power on/off**  
Sliding switch.

The power button is located on the back, at the top of the handle. It is a slider button that pushes upwards and downwards.

**Cold shot**  
Press and hold to deactivate heat and set style.

The cold shot button is located on the back of the handle of the hair dryer, just below the power button.

**Air inlet**

The air inlet is covered by the filter and is located at the bottom of the handle.

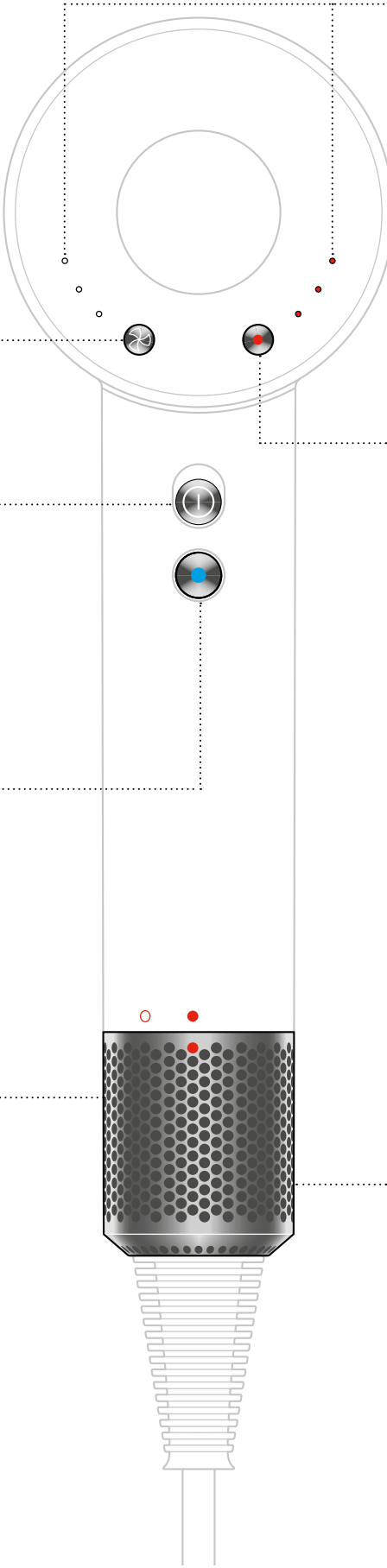
**LEDs**  
The LED lights are located on the back of the cylindrical head of the hair dryer. They are above both the airflow and temperature buttons. There are three LED lights of each side which light up as the corresponding button is pressed. These lights also indicate that your filter needs cleaning or that there is a fault.

**Temperature control**  
4 precise heat settings.

The temperature control button is located on the back, right hand side of the cylindrical head of the hair dryer.

**Removable filter cage**  
Easy to remove for cleaning.

The filter cage is located at the bottom of the handle.

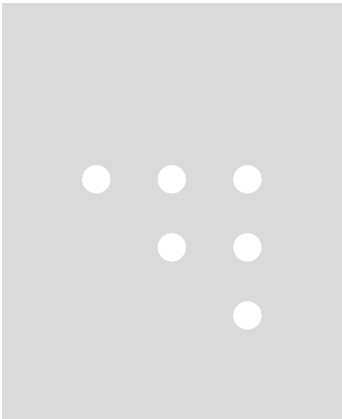


# LEDs

**Settings**  
The LED lights indicate which settings you are using.

**Flow**

- Three white LEDs illuminated.
- Two white LEDs illuminated.
- One white LED illuminated.



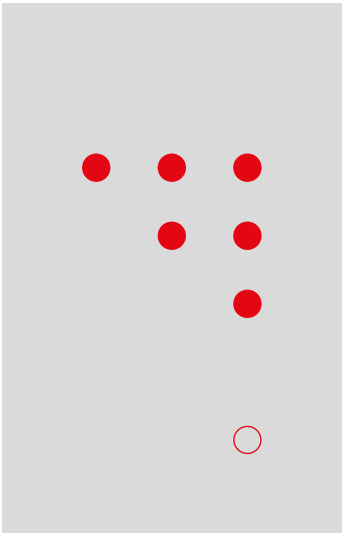
- Fast
- Medium
- Gentle

**Temperature**

Maximum operating temperature in normal working conditions: 105°C.  
Maximum thermistor temperature at safety shut down: 145°C.

- Three red LEDs illuminated.
- Two red LEDs illuminated.
- One red LED illuminated.

No red LED



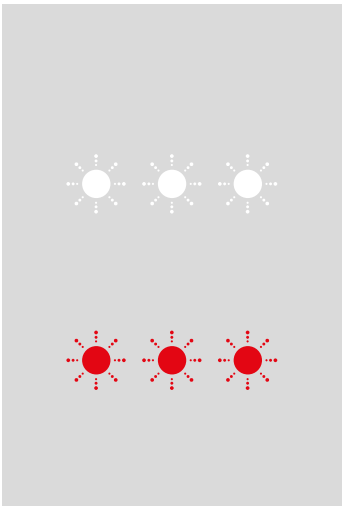
- High
- Medium
- Low
- Cool

**Diagnostics**

The LEDs will flash continuously to let you know that your machine needs attention.

Clean the filter. Follow the instructions or watch the video at [dyson.com.sg/products/hair-care/dyson-supersonic-hair-dryer/owners](https://dyson.com.sg/products/hair-care/dyson-supersonic-hair-dryer/owners)

If all three red lights continue to flash, contact the Dyson Helpline.  
Don't turn back on.



- Three flashing white LEDs.
- Three flashing red LEDs.

# Using your hair dryer

Your Dyson Supersonic™ hair dryer has magnetic styling attachments, for easy fitting and rotation during styling.

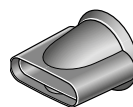
Remove your attachments using the cool edges.

Heat Shield technology keeps the surface of your styling attachments cool.

---

## Smoothing nozzle

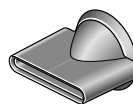
Helps create volume and body. Decreases frizz for a smooth, natural look.



A flat, straight nozzle.

## Styling concentrator

Wider and thinner for precision styling.



Attachment with a flattened, flared nozzle.

## Diffuser

Even diffusion to help define curls and reduce frizz.



A large, wide, circular nozzle with prongs on the inner surface.

## Gentle air attachment

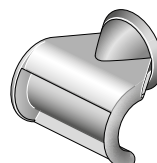
Cooler, gentle drying for fine hair and delicate scalps.



A flat nozzle with a rippled texture.

## Flyaway attachment

For a smooth, shiny finish. Harnessing the Coanda effect to lift longer hairs and hide flyaways.



A flat, hook-shaped nozzle.

# Regular filter cleaning

Check your filter is clear from hair product residue and debris monthly, or when the LED lights alert you.

## Maintaining performance

Unplug your machine from the mains electricity supply and allow to cool down before cleaning your filter.

The Dyson Supersonic™ hair dryer has highly tuned technology to give outstanding performance.

This technology needs to be kept free from dust and hair product residue. Maintenance is required to maintain performance.

### Step 1

Hold the handle of your machine firmly and gently rotate the filter cage anti-clockwise.

### Step 2

Pull down and away from the machine. Use a lint-free cloth or soft brush to remove any dust or debris from both the filter cage and the filter mesh.

### Step 3

**Don't use water to clean the filter mesh.**  
Don't apply too much pressure to the filter mesh.

### Step 4

Rotate the filter cage back into position until correctly aligned.

Rotate clockwise to lock before use.

