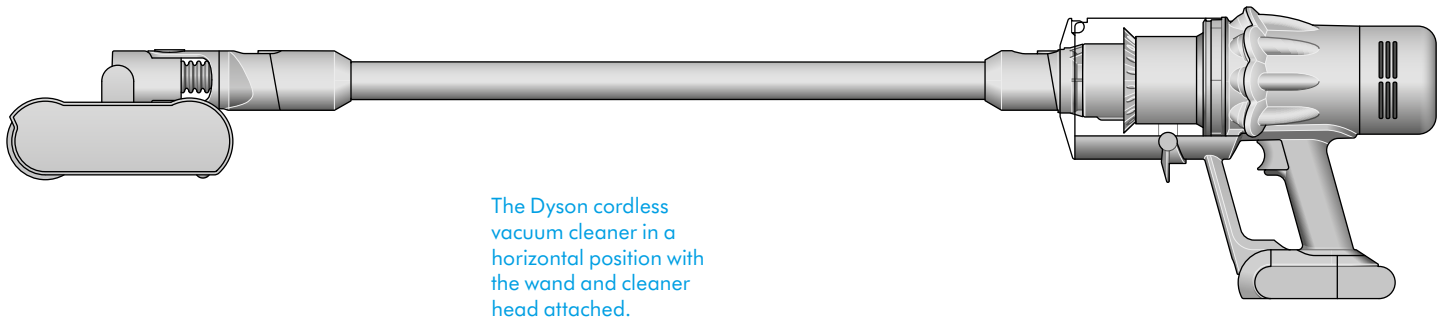


digital slim submarine

Digital Slim Submarine logo

SV12 JN.00000 PN.000000-00-00
00.00.00 VERSION NO.01

User manual



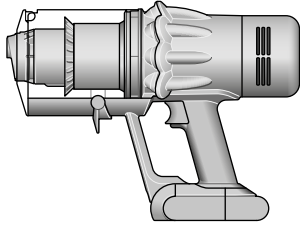
The Dyson cordless vacuum cleaner in a horizontal position with the wand and cleaner head attached.

In the box
Getting started
Charging your machine
Changing your click-in battery
Caring for your floors
How to use your Dyson
Submarine™ wet roller head
How to clean your Dyson
Submarine™ wet roller head
The LCD screen

Emptying your bin
Cleaning your bin
Washing your filter
Clearing blockages
Clearing blockages from your
Hair screw tool
Washing your brush bar
Cleaning your tools
Looking after your machine

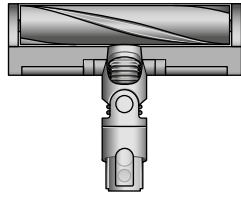
In the box

Main body showing the handle and bin attached.



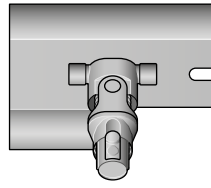
Vacuum cleaner

A soft fluffy brush bar housed within the cleaner head. There is an electrical connector end that can attach to the end of the wand or directly to the machine.



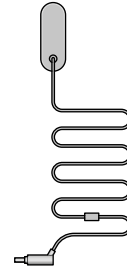
Slim Fluffy™ cleaner head
Engineered for hard floors. Sucks up fine dust and large debris simultaneously.

Aerial view of the Submarine™ wet roller head.



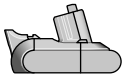
Submarine™ wet roller head
Motorised wet roller continuously removes dust, dirt, spills and tough stains from hard floors.

The charger is a one piece unit with the plug, connector end and cable.

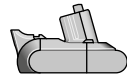


Charger
Charges your vacuum with or without a dock.

A rectangular battery with an slanted connector that slides into the handle of the main body of the machine.



Click-in battery
Remove and replace at the press of a button to double your run time.



Additional click-in battery

The narrow connector end at the top, this connects to the bin and the wider end at the bottom that connects to the cleaner head or tool.



Wand

Some tools may not be included.

You can buy additional tools at www.dyson.co.th.

This tool has a combination of brush head and crevice tool together in one unit. The brush head slides down the crevice tool when needed.



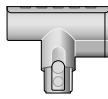
Combination tool
Two tools in one – wide nozzle and brush, for quick switching between cleaning and dusting tasks around your home or car.



Crevice tool
Engineered for precise cleaning around tricky edges and into hard-to-reach narrow spaces.

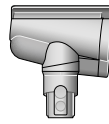
A long tool with an angled end.

A small cleaner head with a body housing the motor and an electrical connector to attach to the wand or directly to the machine.



Mini motorised tool
Motorised brush bar, concentrated in a smaller head to remove stubborn dirt from mattresses, upholstery and stairs.

A small cleaner head with an angled body housing the motor and an electrical connector to attach to the wand or directly to the machine.



Hair screw tool
Anti-tangle conical brush bar spirals hair off and into the bin. Motor-driven cleaning for smaller spaces.



Flexi crevice tool
Extends and bends. For hard-to-reach places around your home and car.

A long tool with an angled end with the addition of an extendible flexible section, extended using the button located at the brush end of the tool.



Light pipe crevice tool
Crevice tool with LED lights lets you reach into dark, narrow spaces and see where you're cleaning.

A long tool with an angled end and electrical connector end that powers LED lights when connected to the machine.

A jointed connector that creates a flexible joint between the machine and the tool. It must be used in conjunction with a tool or cleaner head.



Low-reach adaptor
Bends to comfortably reach down low. Engineered to clean further under low furniture by adjusting the wand angle up to 90°.

Pliable bristles and felt bumper strip on a narrow, tapered tool.



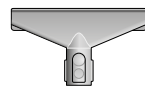
Soft dusting brush
Enclosed in a skirt of soft nylon bristles for gentle, vacuum-assisted dusting of delicate objects and surfaces.

Stiff bristles on a wide head.



Stubborn dirt brush
Stiff nylon bristles dislodge ground-in dirt from coarse carpets, high traffic areas and car interiors.

A wide mouth tool with a lint edge.



Fabric and mattress tool
Removes dust, dirt and allergens from mattresses and upholstery.



Up-top adapter
Bends and locks at different angles. Fits any compatible tool for effective cleaning in hard-to-reach high areas of your home.

A flexible joint between the machine and the tool. It must be used in conjunction with a tool or cleaner head.



Extension hose
Adds up to 61 cm of flexible reach to any tool attachment, to clean up high or down low in your home or car.

A flexible hose engineered from tough wire and durable plastic.

A plastic clip that attaches to the wand

Wand clip

Getting started

Fully charge your machine before using for the first time.



The button on the screen being pressed.

Power modes

Your machine has three power modes for different tasks. Change power modes quickly using a single button.



The screen showing the machine set to Eco mode with a full battery in green to show that this will give the longest battery life of the three modes.

Eco mode

Maximum run time for longer cleans all around your home.



The screen shows the machine set to Med mode with a blue battery showing that this will give a medium length of battery life.

Med mode

The optimum balance of power and run time.



The screen showing the machine set to Boost mode with a red battery to show that this will give the shortest battery life of the three modes.

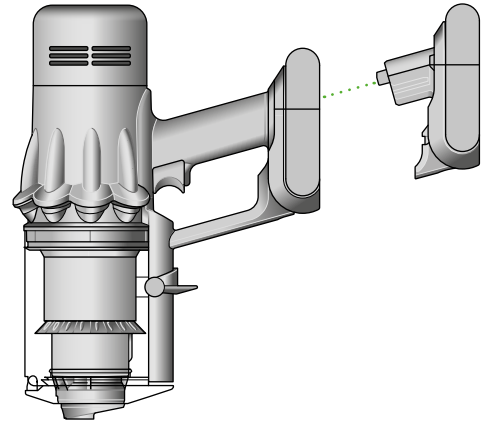
Boost mode

Designed for intensive spot cleaning of ground-in dirt.

Slim Fluffy™ cleaner head

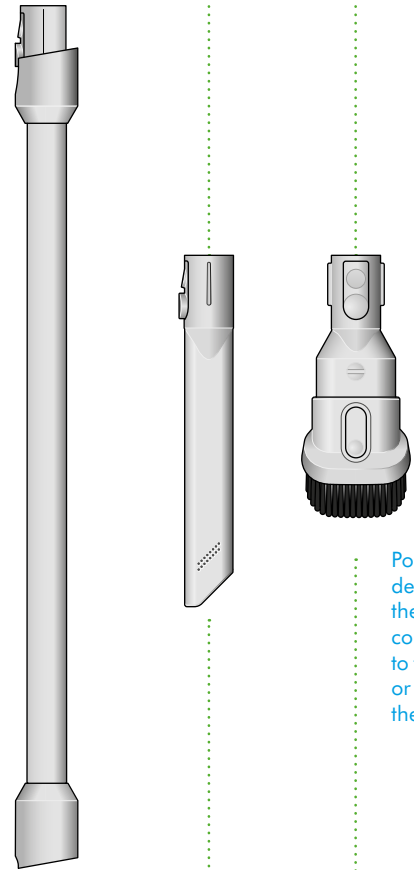
Engineered for hard floors. Sucks up fine dust and large debris simultaneously.

Location of the Selection button on the screen on the filter end of the machine.



clik

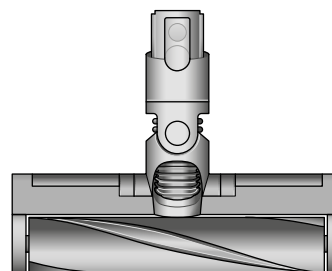
Diagram showing the connection of the wand onto the main body, with the wand release button aligned with the top of the main body.



Pointers to demonstrate that the tools can be connected directly to the main body or to the end of the wand.

Arrow showing the end of the wand connecting to the cleaner head.

clik



Charging your machine

It's important to fully charge your new machine before using it for the first time, and after every clean. This is because the battery and monitoring system's algorithm 'learns' over time, and fully charging your machine helps it to more accurately calculate and display remaining run time.

Connect to the charger either directly or in the dock.

The blue LEDs on either side of the battery will flash during charging.

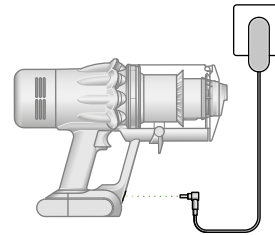
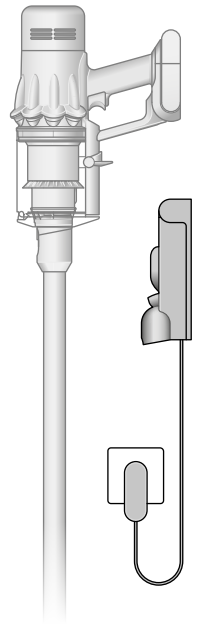
When the battery is fully charged, both LEDs will light for 5 seconds.

Your battery is fully charged when the display shows 100%.

Your machine won't operate or charge if the ambient temperature is below 5°C (41°F). This is designed to protect both the motor and battery.

You can help prolong the battery life by leaving your machine to cool down before recharging.

The charger connected from the power supply using the wall dock.



The charger connected from the power supply directly into the front of the battery.

Changing your click-in battery

If you have additional click-in batteries, we recommend that you alternate the batteries to maintain even performance.

Removing your battery

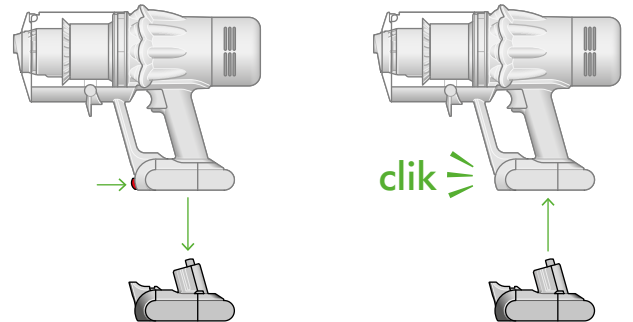
Push the Battery release button on the handle and slide the battery off your machine.

Charge the battery.

Refitting your battery

Align your battery with the handle and slide it in. Push firmly until it clicks into place.

Arrows showing the location of the Battery release button and the battery coming off the handle when the button is pressed. The battery is then shown being replaced on the base of the handle, clicking into place.



Caring for your floors

Check that the underside of the cleaner head or tool is clean and free from any objects that may cause damage.

Before vacuuming your flooring, rugs, and carpets, check the manufacturer's recommended cleaning instructions.

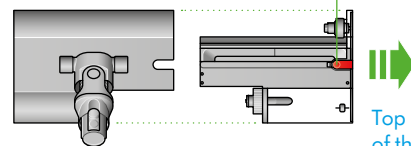
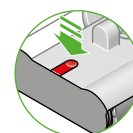
The brush bar on your machine can damage certain carpet types and floors. Some carpets will fuzz if a rotating brush bar is used when vacuuming. If this happens, we recommend vacuuming without the motorised floor tool and consulting with your flooring manufacturer.

How to use your Dyson Submarine™ wet roller head

Step 1

Hold the wet roller head at the edges, press the red Quick-release button and slide out the removable cassette from the main roller head.

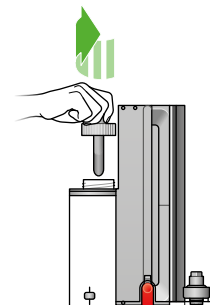
A close-up detail shows the red Quick-release button on the main roller head.



Top down image of the water reservoir with an arrow as it slides apart from the main roller head.

Step 2

Remove the cap on the water reservoir.

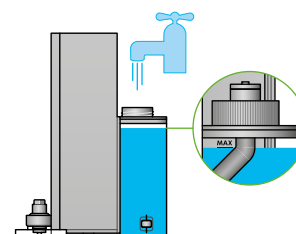


A hand removes the cap from the water reservoir with an anti-clockwise icon.

Step 3

Fill the water reservoir with clean water to the MAX line.

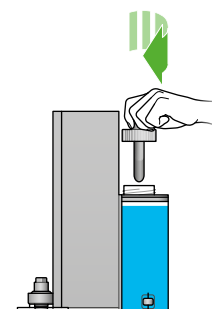
The water reservoir being filled with tap water.



Step 4

Fit the cap securely on the water reservoir.

A hand replaces the cap on the water reservoir with a clockwise icon.



A close-up detail of the LCD screen with the battery level indicator.

Step 5

Slide the waste extraction tray and water reservoir back into the main roller head until you hear a click. Attach the main wet roller head to your vacuum's wand.

Remaining battery life will be displayed as a percentage on your LCD screen. You can wet clean until the water in water reservoir is running low or until the battery runs out. To continue cleaning, simply empty the waste extraction tray, refill your water reservoir, and resume cleaning.

Do not wet clean with an empty water reservoir to prevent the motor overheating.

Arrows show the waste extraction tray and water reservoir sliding towards the main roller head with a click icon.



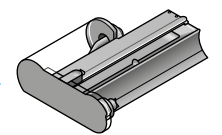
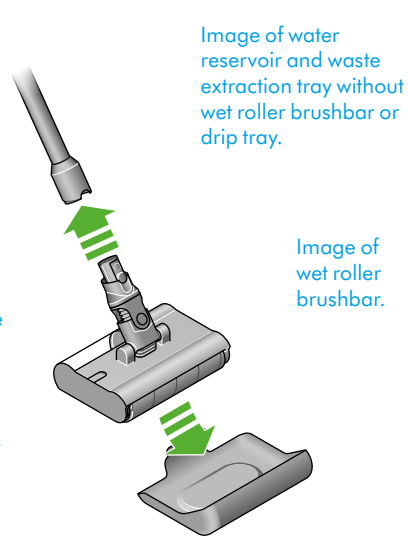
Arrows show the wand moving towards the wet roller head with a click icon.

How to clean your Dyson Submarine™ wet roller head

Step 1

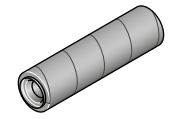
Turn off your machine and detach the Dyson Submarine™ wet roller head from the wand. Place it in the drip tray immediately to prevent dirty water spillage.

A green arrow indicating how the wand detaches from the Dyson Submarine wet roller head, and how to put the wet roller head into the drip tray after wet cleaning.



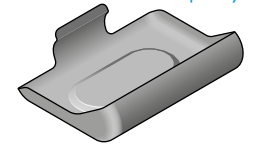
Water reservoir and waste extraction tray

Image of wet roller brushbar.



Wet roller

Image of drip tray.



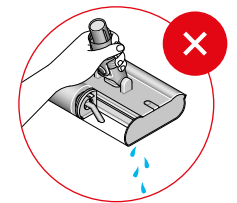
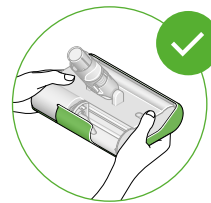
Drip tray

The wet roller head held by the neck without the drip tray. Water is shown dripping from the roller head. A red cross icon indicates incorrect usage.

Step 2

Hold the wet roller head level in the drip tray.

The wet roller head being placed in the drip tray, held at the sides, with a green tick to indicate correct usage.



A hand removing the red dirty water tray cap and emptying the dirty water and waste.

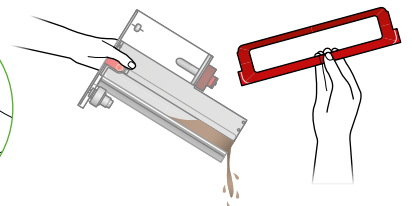
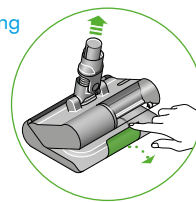
Step 3

Hold the wet roller head over a sink. Remove it from the drip tray.

Hold the wet roller head at the edges, press the red Quick-release button and slide out the removable cassette from the main roller head.

Remove the red dirty water tank cap to empty the waste extraction tray.

A hand removing the wet roller head from the drip tray.



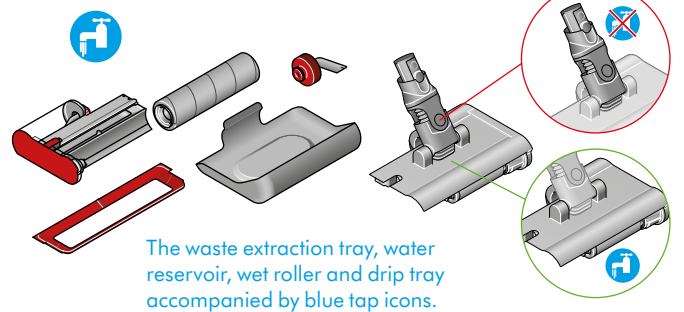
Red cross indicating the neck cannot be exposed to water. The main roller head with a green circle and water tap means it can be washed with water.

Step 4

Don't get water on the neck of the wet roller head, as it may damage the connection to the wand.

Disassemble the Submarine™ wet roller head. Every part of the wet roller head can be washed with water and a household anti-bacterial solution diluted according to the manufacturer's recommended ratio.

Empty any leftover water from the water reservoir.



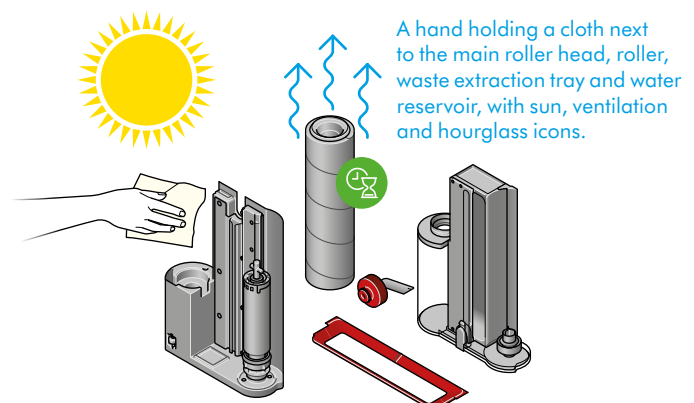
The waste extraction tray, water reservoir, wet roller and drip tray accompanied by blue tap icons.

Step 5

Leave the wet roller to air dry in a warm, well-ventilated space.

Use a cloth to wipe away any dirt or excess water from the main roller head, waste extraction tray and water reservoir.

We recommend replacing the wet roller every six months, depending on how often you use your machine, to help maintain performance.



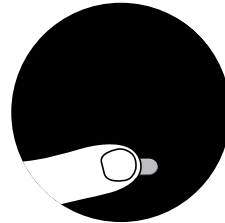
The LCD screen

The LCD screen shows current performance, including selected cleaning mode, remaining run time, filter maintenance and blockage reports.

Settings menu

Control the settings on your machine using the button. To enter the settings menu, press and hold the button until the menu screen appears. Tap to scroll through the options available.

For more information and support videos for your machine go online: www.dyson.co.th



The Selection button on the screen being pressed.

Change language

To change the language on your screen, press the button and hold until the language list appears. Release the button.

Tap the button to scroll through the language list to your preferred language. Press and hold the button until the countdown ends.

A green tick will appear on the screen to show your language selection is complete.

To cancel your selection, release the button during the countdown.



Two screens, the first with the language list and then the tick screen to show that the language has been successfully changed.

Change alert settings

You can turn the alert motor pulse off. Your motor will no longer pulse but run time alert information will continue to be displayed on the LCD screen when your machine needs your attention.

Turning off alerts will not turn off the blockage alert pulsing. This is to ensure you clear any blockages, preventing damage to your machine.

Tap to scroll through the settings menu. Select the 'Alerts' option.

Scroll to select on or off. Hold the button until the countdown ends and a tick appears on the screen. To cancel your selection, release the button during the countdown.

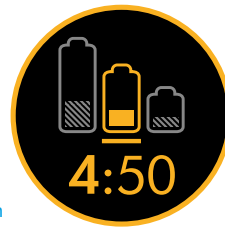


The screen with an amber warning triangle to demonstrate an alert.

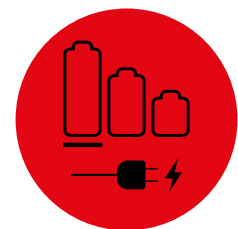
Run time countdown

When the battery needs charging, your machine will pulse three times and a low run time icon will appear on the screen.

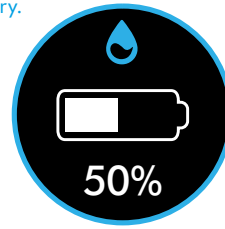
When your battery is empty, a red warning icon will appear on the screen.



The screen with a battery time remaining shown as a number and as a half filled battery.



A red screen with an icon with a plug being connected to the power supply. This demonstrates the battery is empty and needs charging.



A screen showing a water droplet and remaining battery life.

Battery health

To get the best performance and life from your battery, use Eco or Med mode.



The battery health is shown on the batteries on the screen.

Alerts

The alerts you might see are:

Filter – the filter isn't fitted correctly, or needs cleaning.

Blockage – your machine has a blockage that needs removing.

Alert icon with Fully charge before first use wording.



Alert icon with Airways blocked wording.



Alert icon with Filter not sealed wording.

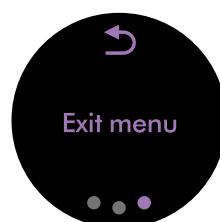


Alert icon with Filter needs cleaning wording.



Exit settings menu

To exit the settings menu, tap to scroll through the selection menu. Select 'Exit menu'.



Screen with Exit menu wording and return icon.

Emptying your bin

Empty as soon as the dirt reaches the MAX level – don't overfill. Using your machine when the dirt is above the MAX line may affect the performance and require more frequent filter washing.

Remove your wand

Press the red wand release button, on the top of the wand, and pull the wand away from the bin.

Release the dirt

Hold the machine over the bin, pointing downwards.

Firmly push the red bin release button. The bin will slide down, cleaning the shroud as it goes, and the bin base will open.

The bin base won't open if the red bin release button isn't pushed down all the way.

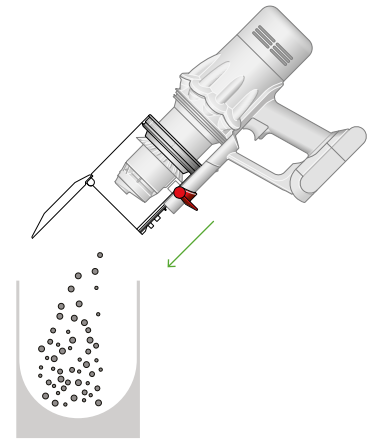
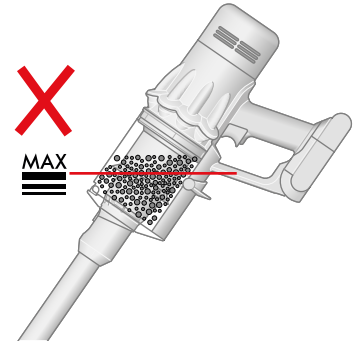
Minimise dust contact

Cover your bin tightly in a dust proof bag while you empty. Remove your bin carefully, seal the bag tightly and dispose.

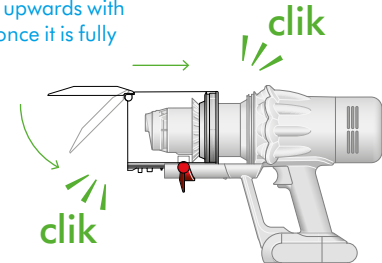
Close the bin

Push the bin base upwards until your bin and bin base click into place.

The MAX mark on the bin of the machine, showing that the dirt should not be filled over the Max mark when the machine is at the angle of normal use.



The bin lid closing with an audible click and the bin being pushed upwards with another click once it is fully in place.



Cleaning your bin

Remove your bin

If it is necessary to clean your bin, empty it as shown in the 'Emptying your bin' section.

Press the red button located on the bin runner to release the bin and slide your bin off the runner.

Only use a damp, lint-free cloth to clean your bin.

Make sure that your bin and seals are completely dry before replacing.

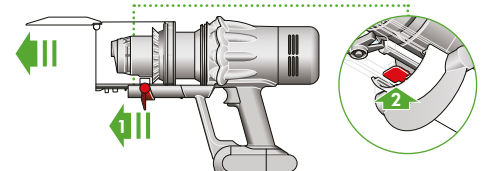
Refit your bin

Insert the spine on to the bin runner.

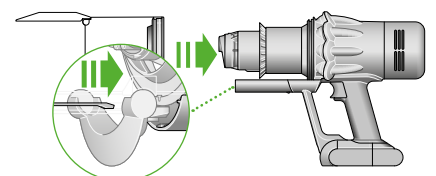
Close your bin by pushing the bin base upwards until the bin and bin base click into place.

Your bin isn't dishwasher safe and the use of detergents, polishes or air fresheners to clean your bin isn't recommended, as it may damage your machine.

The bin being removed and the location of the bin release lever on the underside of the bin runner.



The bin being pushed back into position on the bin runner.



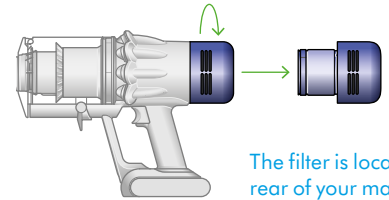
Washing your filter

For more information and support videos for your machine go online:
www.dyson.co.th

Wash your filter at least once a month to maintain optimum suction power.

Twist off your filter

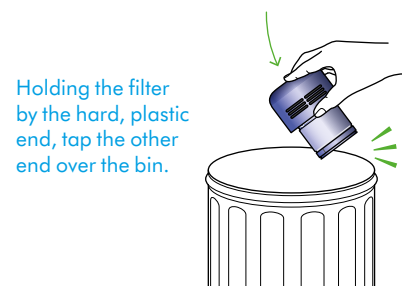
Twist your filter anti-clockwise and pull it away from your machine.



The filter is located at the rear of your machine.

Tap your filter

Before washing your filter, tap it gently over a bin to remove any loose dust and debris.



Holding the filter by the hard, plastic end, tap the other end over the bin.

Wash your filter

Wash with warm, running tap water – gently rubbing your filter with your fingers to remove the dirt.

Fill and shake

Place your hand over one end of your filter.

Fill the filter with warm tap water.

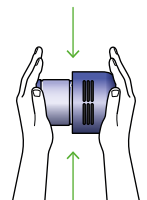
Place your hand over the open end of the filter and shake it firmly to remove trapped dirt and debris.

Repeat these steps until the water runs clear.

Filter held in upright position, with the wider end in the palm of a hand. Water running from a tap into the narrower end.



Filter with hand over the open end with arrows showing a shaking motion.



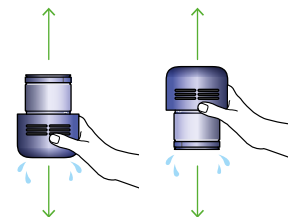
Shake out the water

Empty the filter and shake firmly to remove excess water.

Shake with the filter in both an upward and downward position.

Keep shaking until there's no water coming from the filter.

A hand holding the filter with the narrow end pointing downwards with droplets of water being shaken from the filter and again, with the end pointing downwards shaking water out.



Dry your filter

Don't dry your filter in a tumble dryer, microwave or near a naked flame.

Important: your filter must be completely dry before you put it back into the machine. Your machine could be damaged if used with a damp filter.

Vacuum's filter when removed, with the wider plastic casing at the bottom and narrow end facing upwards.



Clearing blockages

Disconnect your machine from the charger before looking for blockages. Be careful not to touch the trigger and be aware of sharp objects.

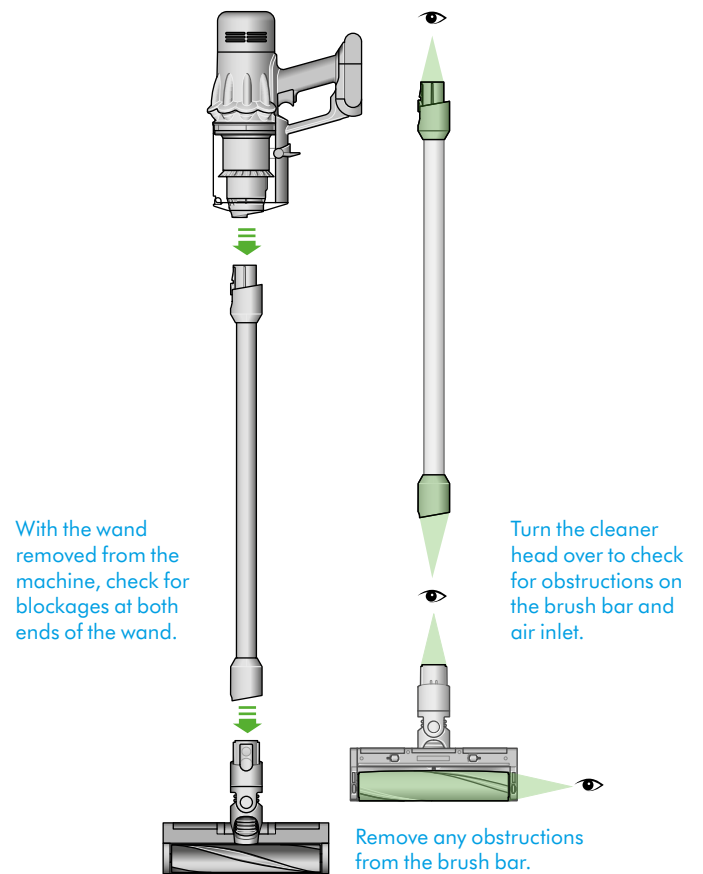
Leave your machine to cool down before looking for blockages.

Don't use your machine when looking for blockages as this could cause injury.

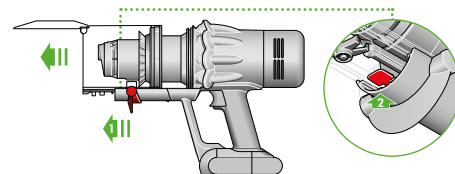
If your machine detects a blockage, the motor will pulse six times. You won't be able to use your machine until the blockage has been cleared.

If you try to use your machine when the motor is pulsing, it will automatically cut out.

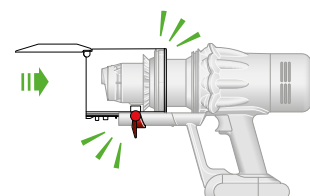
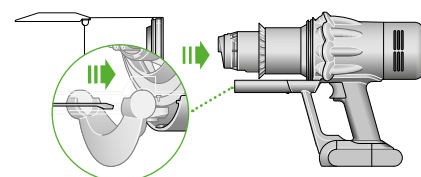
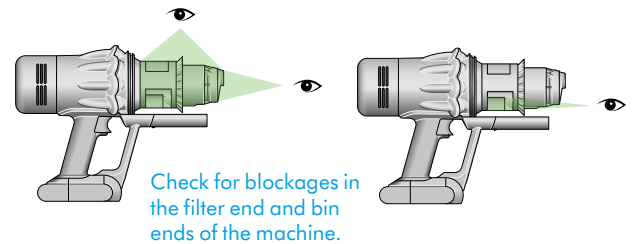
Leave your machine to cool down before looking for blockages and, for your safety, take care not to touch the trigger.



The bin being removed and the location of the bin release lever on the underside of the bin runner.



With the bin removed, check for blockages, paying particular attention to the air inlet, located at on the right-hand side of the machine just below the point where the bin joins the main body of the machine.



Clearing blockages from your Hair screw tool

Your Hair screw tool doesn't have a washable brush bar. To maintain optimum performance, check your brush bar regularly and clear any obstructions.

Make sure your machine is disconnected from the charger and take care not to touch the trigger.

Remove the cover and brush bar

Remove the Hair screw tool from the wand or machine.

Push the base plate open. Press the red lever down to release the cleaner head cover.

Pull the cleaner head cover off the main body of the tool.

Look for obstructions

Pull your brush bar firmly to remove it from the main body.

Check and remove any obstructions from all three parts of your Hair screw tool.

Your Hair screw tool isn't washable. Wipe over with a damp lint-free cloth.

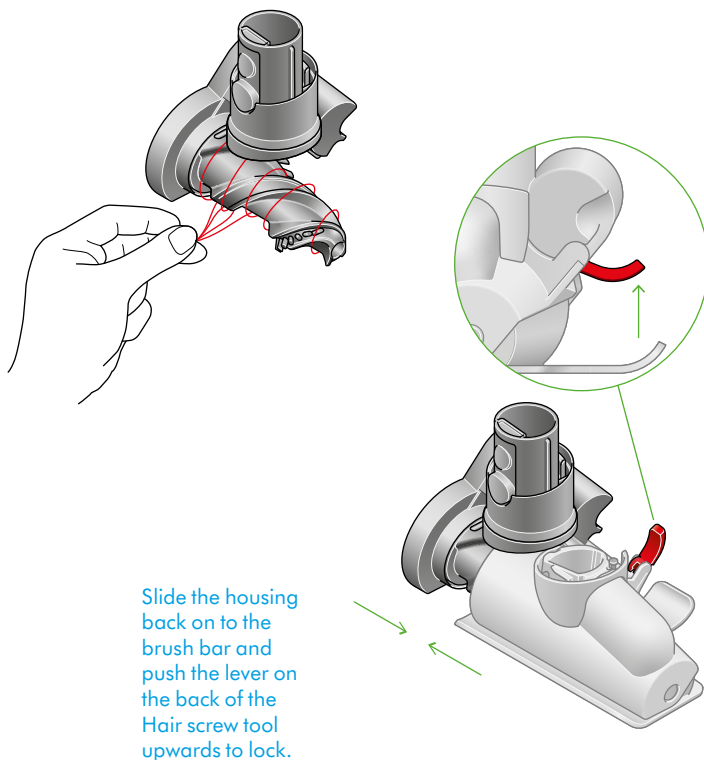
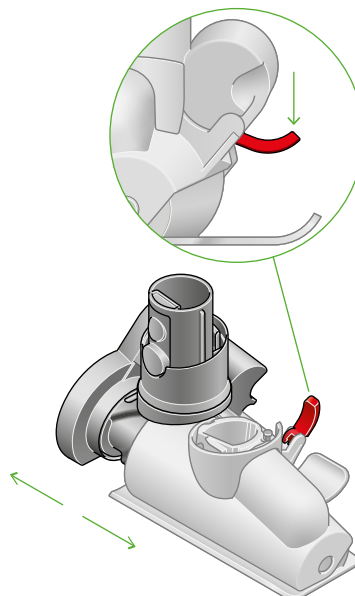
Don't put any part of your machine in a dishwasher or use detergents, polishes or air fresheners.

Re-assemble Hair screw tool

Put your brush bar back into position and press firmly until it clicks back into position.

Check the red locking lever is in the unlocked position. Align the cleaner head cover with the guide on the main body. Push it down until it clicks into position.

Push the red locking lever up until it clicks into position and push the base plate back into place.



Washing your brush bar

To maintain optimum performance, check and wash the brush bar regularly.

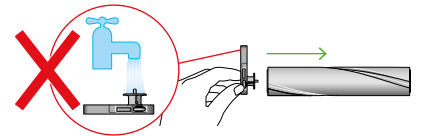
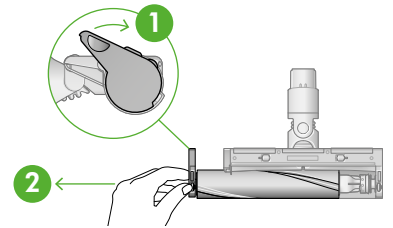
Remove brush bar

Don't put any part of your machine in a dishwasher or use detergents, polishes or air fresheners.

Press the cleaner head release button to remove it from the wand.

Pull the brush bar off the end cap and put the end cap to one side, don't wash it.

The end cap is located at the side of the cleaner head. Push this upwards to unlock the brush bar. Don't wash the end cap.

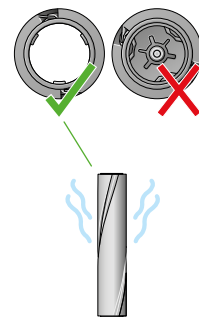


Wash and dry brush bar

Hold your brush bar under cold tap water and gently rub to remove any lint or dirt. Keep washing until the water runs clear.

Stand the brush bar upright and leave for at least 24 hours to dry.

The brush bar has an open end and a closed end. Stand upright, with the closed end facing upwards, to dry.



Replace your brush bars

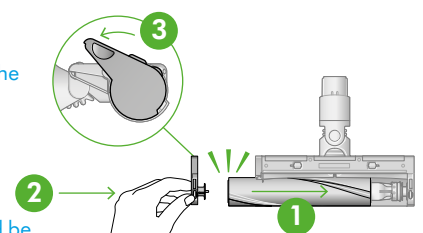
Make sure your brush bar is completely dry before refitting.

Reattach the end cap to the brush bar and slide it back into the cleaner head.

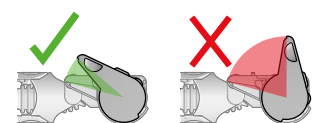
Rotate the end cap until it clips securely back into position.

The cleaner head housing is not washable and should only be wiped over with a damp lint-free cloth.

The brush bar is reinserted into the cleaner head and the end cap rotated to the locked position.



The end cap should be attached to the cleaner head at an angle less than 90°, any angle greater than this will not allow the end cap to close.



Cleaning your tools

Don't put any part of your machine in a dishwasher or use detergents, polishes or air fresheners.

Wipe with a damp, lint-free cloth, without touching the connector end.

Make sure your tools are completely dry before using.



Combination tool



A long tool with an angled end.

Crevice tool



A flexible hose engineered from tough wire and durable plastic.

Extension hose



A long tool with an angled end and electrical connector end that powers LED lights when connected to the machine.

Light pipe crevice tool



A jointed connector that creates a flexible joint between the machine and the tool. It must be used in conjunction with a tool or cleaner head.

Low-reach adaptor



Pliable bristles and felt bumper strip on a narrow, tapered tool.

Soft dusting brush

Stiff bristles on a wide head.



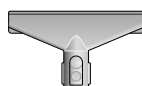
Stubborn dirt brush



A flexible joint between the machine and the tool. It must be used in conjunction with a tool or cleaner head.

Up-top adapter

A wide mouth tool with a lint edge.



Fabric and mattress tool

Looking after your machine

To always get the best performance from your machine, it's important to clean it regularly and check for blockages.

Look after your machine

If your machine is dusty, wipe with a damp lint-free cloth.

Check for blockages in the cleaner head, tools and main body of your machine.

Wash your filter regularly and leave to dry completely.

Don't use detergents or polishes to clean your machine.

Look after your battery

To get the best performance and life from your battery, use Eco or Med mode.

Your machine won't operate or charge if the ambient temperature is below 5°C (41°F). This is designed to protect both the motor and battery.

Your serial numbers

You can find your serial numbers on your machine, battery and charger.

Use your serial number to register.

You can register your machine using the serial number found on the bottom of your machine.